



WATERPROOFING



FLOORING



INDUSTRY



COMPLEMENTARY



MACHINERY

Catalogue 2025

**SOLUTIONS AND SYSTEMS
FOR CONSTRUCTION AND INDUSTRY**

VERSION 1. JANUARY





**we do it
for you.**

Catalogue 2025

SOLUTIONS AND SYSTEMS
FOR CONSTRUCTION AND INDUSTRY

Index

THEMATIC

INTRODUCTION 13

PRODUCT RANGE

WATERPROOFING

LIQUID MEMBRANES

SINGLE COMPONENT, COLD APPLIED POLYURETHANE WATERPROOFING

Impermax	18
Impermax ST	18
Impermax QC	18
Impermax A	19

SINGLE COMPONENT, COLD APPLIED POLYURETHANE-BITUMEN WATERPROOFING

Impermax B 1K	19
Impermax GC	19

SINGLE COMPONENT, COLD APPLIED ACRYLIC WATERPROOFING

Acrimper	19
----------------	----

SINGLE COMPONENT, COLD APPLIED WATER BASED PU WATERPROOFING

Impermax Aqua	20
---------------------	----

TWO COMPONENT, COLD APPLIED POLYURETHANE WATERPROOFING SOLVENT FREE

Impermax Aqua 2K	20
Impermax 2K M	20

TWO COMPONENT, COLD APPLIED POLYUREA WATERPROOFING

Impermax Cold Polyurea	21
Impermax Cold Polyurea ST	21
Impermax Cold Polyurea Supreme	21

WATERPROOFING OF MANHOLES BASED ON EPOXY RESINS

Impermax EP	21
-------------------	----

HOT SPRAY APPLIED WATERPROOFING

Polyurea Rayston	22
Polyurea Rayston P	22
Polyurea Rayston A	22
Rayston Spray D50	23

Rayston Fire E	23
Impermax Polyurea H	23
Impermax Polyurea H Flex	24
Impermax Polyurea H Flex (aluminice colour)	24
Impermax Polyurea H Flex (bronze colour)	24
Impermax Polyurea H Supreme	24
Impermax 2K	25
Polyurea Rayston X5	25

ALIPHATIC POLYURETHANE TOP COATS

Impertrans	25
Colodur	26
Paintchlore	26
Paintchlore 2K	26

ALIPHATIC WATER BASED POLYURETHANE TOP COATS

Impertrans Eco	27
----------------------	----

ALIPHATIC POLYASPARTIC TOP COATS COLD APPLIED

Impertop Fast 2K	27
Impertop Fast Flex / Fast Flex S	27

INJECTION SYSTEMS

POLYURETHANE INJECTION RESINS	28
Aquapur + Aquapur Accelerator	28
Aquapur Flex + Aquapur Flex Accelerator	28

ACCESSORIES FOR INJECTION RESINS	28
--	----

Index

THEMATIC

PRODUCT RANGE

FLOORING

SELF-LEVELLING PRODUCTS

Pavifloor	32
Pavisoft	32
EP Nivel / EP Nivel Clear	32

HIGH PERFORMANCE HOT SPRAY-APPLIED

PROJECTED SYSTEMS FOR FLOORING

Polyurea H SL	32
Rayston Floor D50 FR	33
Rayston Floor D40 FR	33

HIGH PERFORMANCE TECHNICAL PU CEMENT MORTARS

Raycrete SL (SELF-LEVELING)	33
-----------------------------------	----

TOP COATS

SINGLE COMPONENT, ALIPHATIC POLYURETHANE TOP COAT Floortop 1K	34
---	----

TWO COMPONENT, ALIPHATIC POLYURETHANE TOP COATS	
Colodur Eco	34
Colodur Eco Matt	34
Colodur Eco Satin	35

HIGH REACTIVITY TOP COATS

Kryptanate M	35
Kryptanate M Flex	35
Kryptanate 100	36
Kryptanate 100 Flex / Flex S	36
Kryptanate 100 LV	36

EPOXY TOP COATS

EP Coat 100 / EP Coat 100 Clear	37
EP Coat F	37
EP Aquacoat	37

STONE BINDERS

HIGH PERFORMANCE MONOCOMPONENT POLYURETHANE BINDER

Pavistone 1K HV	38
Pavistone 1K Arom	38

TWO COMPONENT POLYURETHANE BINDER

Pavistone 2K	38
Pavistone 2K UV	38

TWO COMPONENT EPOXY BINDER

Pavistone Epoxy UV	39
--------------------------	----

QUARTZ SAND NATURAL, PIGMENTED AND MIXED

DECORATIVE AGGREGATE FOR DRAINABLE SYSTEMS

QUARTZ SAND COLOURS

PIGMENTS

DECORATIVE FLAKES

RUBBER BINDERS

RECYCLED RUBBER FOR SYNTHETIC FLOORING

Index

THEMATIC

PRODUCT RANGE

INDUSTRY & PROTECTIVE COATINGS

POLYUREA TECHNOLOGY

ABRASION AND IMPACT RESISTANCE, AND CHEMICAL RESISTANCE

Krypton ProLine AB95P	48
Krypton ProLine CH55	48
Krypton ProLine AB85H	49

SPECIAL APPLICATIONS

Krypton ProLine 60 EPS	49
Krypton ProLine AB70 A Plus	49

EPOXY TECHNOLOGY

ABRASION RESISTANCE

Krypton ProLine MFE 100	50
-------------------------------	----

CHEMICAL RESISTANCE

Krypton ProLine NE 500	50
------------------------------	----

POLYURETHANE TECHNOLOGY

PRIMERS

Krypton ProLine PU ZN Primer	51
Krypton ProLine PU AL Primer	51

INTERMEDIATE COAT

Krypton ProLine AC MIO	51
------------------------------	----

TOP COATS

Krypton ProLine Silver TC	52
Krypton ProLine PU 1000 TC	52

OTHERS

Krypton ProLine Thinner	52
-------------------------------	----

PRODUCTS AND ACCESORIES

COMPLEMENTARY

SUPPORT PREPARATION

CARRIER AND PREPARATION OF AWKWARD SUBSTRATES

Rayston Vel	56
Rayston Vel Plus	56

REPAIR AND PREPARATION MORTAR OF NEGATIVE WET OR PRESSURE SUPPORTS

Tecnocem	56
----------------	----

SPRAY PRIMERS

Rayston Spray Primer 150	56
--------------------------------	----

ADHESIVES

Adhesive PU 1K	57
Adhesive PU 2K	57
Rayston Insulation Adhesive	57

POLYURETHANE ISOLATING FOAMS

Rayston Spray Foam 8W / 30W / 40W / 50W	57
Rayston Spray Foam HFO 35 / 40 / 50	57

PRIMERS

POLYURETHANE PRIMERS

Porosity Sealer	58
Porosity Sealer Flex	58
Porosity Sealer Flex 100	58
Rayston Prim PU 100	58
Primer PU 2K	58
Primer PU 2K BIO	59

ADHESION PROMOTERS

PU Primer	59
-----------------	----

EPOXY PRIMERS

Humidity Primer	59
Humidity Primer LV	59
Primer GC	59
Primer GC Thixo	60
Primer Epoxy 100	60
Primer Epoxy Plus	60
Primer Epoxy Plus 2	60
Rayston Epoxy 100 Gel	60

Index

THEMATIC

COLD APPLIED POLYUREA PRIMERS

Polyurea Primer.....	61
Polyurea Primer Flex	61

SPECIAL PRIMERS

Rayston TPO Primer.....	61
-------------------------	----

ADDITIVES, CATALYSTS AND SOLVENTS

Rayston PU Solvent.....	62
Slow Solvent PU.....	62
Pur Cat Additive.....	62
Superaccelerator PU	62
Accelerator for PU 2K.....	62
Epoxy Accelerator.....	62
Thixotropy Additive (Liquid)	62
Thickening Additive (Powder)	63
Matting Additive.....	63
Antislip Additive (Fine).....	63
Antislip Additive (Coarse).....	63
Paint Stripper K.....	63
Rayston fluid	63

JOINT TREATMENTS

MASTICS AND SEALATS

Rayston Flex 3040.....	64
Gun for Rayston Flex 3040	64

SELF-ADHESIVE BUTYL / POLYESTER TAPE

Butyl Tex	64
-----------------	----

BANDA TPE

Rayston Flex Joint.....	65
Rayston Flex Joint Geo	65
Rayston Tape	65

GEOTEXTILES

NON WOVEN FLEECE

Geomax.....	66
-------------	----

FIBERGLASS

Rayston Fiber.....	66
Rayston Fiber Net.....	66
Plugs for Rayston Fiber Net.....	66

SPECIAL NMDC NON WOVEN FOR HOT SPRAY SYSTEMS

Geomax spray NMDC	66
-------------------------	----

SPECIFIC PRODUCTS FOR

MACHINERY

MANUAL MACHINERY

Rayston Spray Gun	70
Cartridges	70
Piston Insertion Tool	70
Static mixing pouring tips, seals 1:1	70
Mixing spray tips, anti-return.....	70
Extension tube 1.50m	70
Air tube extension 1500mm	70
Pneumatic mixer Rayston Spray Gun cartridges	71

POLYUREA JOINT FILLER

Polyurea joint filler, set 40 kg (A+B+ 0,5 kg pigment) to pack in spray gun cartridges	71
Filled Cartridges Spray Gun.....	71
Sprayable polyureas with Rayston Spray Gun kit 40 kg (A+B+ 0,5 kg pigment).....	71

SPRAY EQUIPMENT

Rayston G-1 - Spray and joint machine.....	72
Rayston G1000.....	72
Rayston G3500 / G3500 Plus	73
Rayston G5000 / G5000 Plus	73
Rayston Spray RV	74
Rayston Spray Robot.....	74
Rayston Airless.....	75
Rayston G-Max / G-Max+	75

TOOLS

Rayston M - Mechanical purge spray gun	76
Rayston Black Gun - Air purge gun	76
Rayston A - Air purge gun	77
Heated hoses (15 m and 3m lengths)	77
Transfer pump kit.....	77
Recirculation kit.....	77
Pipe Spray Head	78

INDIVIDUAL PROTECTION EQUIPMENT

A2P Powered Ventilation Kit	79
A2P filter kit replacement.....	79
Safety helmet M-306.....	79
Light overprotection (head, neck, shoulders)	79
Change protector film	79

Index

ALPHABETICAL

A

Accelerator for PU 2K	62
Accessories for injection resins	28
Acrimper	19
Adhesive PU 1K	57
Adhesive PU 2K	57
Air tube extension 1500mm	70
Antislip Additive (Fine)	63
Antislip Additive (Coarse)	63
Aquapur + Aquapur Accelerator	28
Aquapur flex + Aquapur Flex Accelerator	28

B

Butyl Tex	64
-----------------	----

C

Cartridges	28
Filled Cartridges Spray Gun	71
Change protector film	79
A2P filter kit replacement	79
Colodur	26
Colodur Eco	34
Colodur Eco Matt	34
Colodur Eco Satin	35
Corundum Sand	39
Crushed Marble Aggregate	43

D

Decorative flakes	42
-------------------------	----

E

EP Aquacoat	37
EP Coat 100 / EP Coat 100 Clear	37
EP Coat F	37
EP Nivel / EP Nivel Clear	32
EPDM Pellets	44
Epoxy Accelerator	62
Extension tube 1.50m	70

F

Floortop 1K	34
-------------------	----

G

Geomax	66
--------------	----

G

Geomax Spray NMDC	66
Gun for Rayston Flex 3040	64

H

Humidity Primer	59
Humidity Primer LV	59

I

Impermax	18
Impermax 2K	25
Impermax 2K M	20
Impermax A	19
Impermax Aqua	20
Impermax Aqua 2K	20
Impermax B 1K	19
Impermax Cold Polyurea	21
Impermax Cold Polyurea ST	21
Impermax Cold Polyurea Supreme	21
Impermax EP	21
Impermax GC	19
Impermax Polyurea H	23
Impermax Polyurea H Flex	24
Impermax Polyurea H Flex (aluminice colour)	24
Impermax Polyurea H Flex (bronze colour)	24
Impermax Polyurea H Supreme	24
Impermax QC	18
Impermax ST	18
Impertop Fast 2K	27
Impertop Fast Flex / Fast Flex S	27
Impertrans	25
Impertrans Eco	27

K

Kit Jupiter	79
Kryptanate 100	36
Kryptanate 100 Flex / Flex S	36
Kryptanate 100 LV	36
Kryptanate M	35
Kryptanate M Flex	35
Krypton ProLine 60 EPS	49
Krypton ProLine AB70 A PLUS	49
Krypton ProLine AB85H	49
Krypton ProLine AB95P	48
Krypton ProLine AC MIO	51
Krypton ProLine CH55	48
Krypton ProLine MFE 100	50

Index

ALPHABETICAL

K

Krypton ProLine NE 500	50
Krypton ProLine PU 1000TC	52
Krypton ProLine PU AL primer	51
Krypton ProLine PU ZN primer	51
Krypton ProLine Silver TC	52

L

Light overprotection (head, neck, shoulders)	79
--	----

M

Matting Additive	63
Mixing spray tips, anti-return	70

N

Natural aggregates	39
--------------------------	----

P

Paint Stripper K	63
Paintchlore	26
Paintchlore 2K	26
Pavifloor	32
Pavisoft	32
Pavistone 1K Arom	38
Pavistone 1K HV	38
Pavistone 2K	38
Pavistone 2K UV	38
Pavistone Epoxy UV	39
Pigments PU	41
Pigment, Water based	41
Piston Insertion Tool	70
Plugs for Rayston Fiber Net	66
Pneumatic mixer Rayston Spray Gun cartridges	71
Polyurea H SL	32
Polyurea Joint Filler, set 40 kg (A+B+ 0,5 kg pigment) to pack in spray gun cartridges	71
Polyurea Primer	61
Polyurea Primer Flex	61
Polyurea Rayston	22
Polyurea Rayston A	22
Polyurea Rayston P	22
Polyurea Rayston X5	25
Porosity Sealer	58
Porosity Sealer Flex	58
Porosity Sealer Flex 100	58
Primer Epoxy 100	64

P

Primer Epoxy Plus	64
Primer Epoxy Plus 2	65
Primer GC	59
Primer GC Thixo	60
Primer PU 2K	58
Primer PU 2K BIO	59
Pur Cat Additive	62

Q

Quartz sand colours	40
---------------------------	----

R

Raycrete SL (SELF-LEVELING)	33
Rayston A - Air purge gun	77
Rayston Airless	75
Rayston Black Gun - Air purge gun	76
Rayston Epoxy 100 Gel	60
Rayston Fiber	66
Rayston Fiber Net	66
Rayston Fire E	23
Rayston Flex 3040	64
Rayston Flex Joint	65
Rayston Flex Joint Geo	65
Rayston Floor D40 FR	33
Rayston Floor D50 FR	33
Rayston Fluid	63
Rayston G-1 - Spray and joint machine	72
Rayston G-Max / G-Max+	75
Rayston G1000	72
Rayston G3500 / G3500 Plus	73
Rayston G5000 / G5000 Plus	73
Rayston Insulation Adhesive	57
Rayston PU Solvent	62
Rayston Prim PU 100	58
Rayston RCB-580	43
Rayston RCB-580 S	43
Rayston RCB-581 A	43
Rayston Spray D50	23
Rayston Spray Foam 8W / 30W / 40W / 50W	57
Rayston Spray Foam HFO 35 / 40 / 50	57
Rayston Spray Gun	70
Rayston Spray Primer 150	56
Rayston Spray RV	74
Rayston Spray Robot	74
Rayston Tape	65
Rayston TPO Primer	61
Rayston Vel	56

Index

ALPHABETICAL

R

Rayston Vel Plus	56
Recirculation kit.....	77
Rubber Matt	44
Rubber Matt Plus.....	44

S

Safety Helmet M-306	32
Selected quartz	39
SBR Pellets	44
Slow Solvent PU.....	62
Spray pigments	41
Sprayable Polyureas with Rayston Spray Gun Kit 40 kg (A+B+ 0,5 kg pigment).....	71
Static mixing pouring tips, seals 1:1	70
Superaccelerator PU	62

T

Tecnocem.....	56
Thickening Additive (Powder)	63
Thixotropy Additive (Liquid)	62
Transfer pump kit.....	77

INTRODUCTION

- Some products that are in this Price list may not be available for immediate delivery.
- Some products may be sold in specific countries and not mentioned in the Price List. Please contact your usual Krypton Chemical contact for more information.
- Before any use, it is recommended to make a proof of application in situ with the specific product. It is important to read the Technical Data Sheet for each product and its Safety Data Sheet.
- The Technical Department of Krypton Chemical can support the client at the design step and the application phase (Technical Assistance).
- For more information, read the product Technical Data Sheet and Safety Data Sheet.
- The pictures available in this Price List are not contractual.
- **We recommend that you carefully read the conditions of sale (at the end of the price list), especially regarding the possible increase in price due to circumstances beyond Krypton Chemical's control.**

SYMBOLS



Pure resin
of Pure Polyurea



Product with
chemical resistance



High performance
product



Pure resin
of Hybrid Polyurea



Fire resistance



Fast curing
product



Product without solvent
and/or with low VOC
emission



Moisture
induced curing



Ultra fast
curing product



Contains renewable
raw materials
of vegetable origin



Product approved
for contact with
drinking water



1-component resin



High elasticity
product



Product with sun
reflective properties,
proven through tests or
due to its colour. Reduces
overheating of a building.



2-component resin



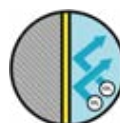
Radon gas
barrier



Product approved
for food contact



Non-flammable
resin with high
solids content



Anti-carbonation
barrier



Methane gas
barrier (CH₄)



Pigmented color
on order



2-component
resin large format

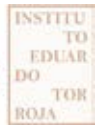


1-component
resin large format



Mineral fillers

LABORATORIES AND CERTIFICATES



PROFESSIONAL ASSOCIATIONS



Waterproofing of the roof at the "Sandro Pertini" Hospital, Rome, Italy.



LIQUID MEMBRANES

INJECTION SYSTEMS

PRODUCT RANGE

Waterproofing

www.kryptonchemical.com



SINGLE COMPONENT, COLD APPLIED POLYURETHANE WATERPROOFING

IMPERMAX RANGE

With the Impermax product family, Krypton Chemical has created a wide range of single component, cold applied polyurethane products for practically any type of waterproofing application.

These products have the ETA Certification 06/0263 for 10 years (W2) and 25 years (W3) as well as a CE mark, BBA n°11/4836. For more information, please check TDS.



IMPERMAX


[DATA SHEET](#)

One-component aromatic polyurethane waterproofing and protective membrane, with a low content of mineral fillers and solvents. Self-leveling, ready to use, it generates a continuous elastomeric membrane, without joints or overlaps, even in different and difficult geometries. Passable, capable of bridging cracks. Suitable for continuous water containment. Anti-root, with good resistance to abrasion and impact, atmospheric and chemical agents, as well as extreme temperatures. It perfectly adheres to different types of support: cement, old asphalt fabrics, acrylics, metal, wood, ceramic, PVC, OSB, etc.

Application:

Roofs, terraces, balconies, channels, tanks, steps, ponds, etc. It can be applied with a roller, brush or airless machine.

Mix the product well with a low speed 300 RPM electric mixer.

Colour	kg
Grey, iron oxide, tile red	6
Grey, iron oxide, tile red	25
Consumption:	Two layers of 0,8-1,0 kg/m ² each.
Notes:	For other colours: please check with the sales office for minimum order and price.

IMPERMAX ST

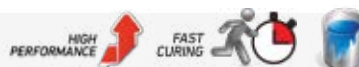

[DATA SHEET](#)

Aromatic single-component polyurethane protective and waterproofing membrane, with low mineral filler and solvent content. Semithixotropic. Application areas: roofs, terraces, balconies, canals, reservoirs, stands, etc. Can be applied with a roller and brush.

It does not require mixing with a specific utensil, it is enough to mix it slightly with the roller.

Colour	kg
Grey 7001-7011	6
Grey 7001-7011	25
Consumption:	Two layers of 0,8-1,0 kg/m ² each.
Notes:	For other colours: please check with the sales office for minimum order and price.

IMPERMAX QC


[DATA SHEET](#)

Liquid aromatic polyurethane resin, **semi-thixotropic fast catalysis for application at low temperatures (winter) ready to use**. It produces a continuous elastomeric membrane without joints or overlaps, walkable, capable of bridging cracks.

Anti-root, with good resistance to abrasion and impact, atmospheric and chemical agents, as well as extreme temperatures. It perfectly adheres to different types of support: cement, old asphalt, acrylic, metal, wood, ceramic, PVC, OSB, etc., and even to rare and difficult geometric shapes.

It does not require stirring before application. It is enough to mix slowly with roller before use.

Colour	kg
Grey 7001-7011	5
Grey 7001-7011	25
Consumption:	Two layers of 0,8-1,0 kg/m ² each.
Notes:	Standards colours grey 7001 and grey 7011. For other colours: please check with the sales office for minimum order and price.

IMPERMAX A



DATA SHEET

Aliphatic moisture activated polyurethane resin. Therefore, the curing reaction is fast and does not generate foam or the formation of CO₂ bubbles. Once cured, it forms a continuous membrane, resistant to pedestrian traffic, elastomeric and able to bridge over the cracks from the support. Supplied only in reflective white and grey (similar to RAL 7001).

When cured, it shows an excellent resistance to abrasion, scratch, impact, UV radiation, outdoors, extreme temperatures and ponding. Designed to be applied as a second layer on top of a cured first layer of an aromatic single component polyurethane from the Impermax range, avoiding the need to apply a final aliphatic top coat, thus saving a step in the whole application process.

Roofs, terraces, balconies, stadium stands, canals, outdoors neutral water containment structures, etc. It can be applied with a roller, brush or trowel.

High solar reflectance, "cold roof" (SRI > 100) can be achieved with white reflective colour.

Colour	kg
Reflectance white - Grey	6
Reflectance white - Grey	25
Consumption:	As a second layer on another Impermax product: 0,5-1 kg/m ² .
Notes:	Minimum order quantity: 2.400 kg. Possible in two different colours, 1.200 kg per colour.

SINGLE COMPONENT, COLD APPLIED POLYURETHANE-BITUMEN WATERPROOFING

IMPERMAX B 1K



DATA SHEET

Impermax B 1K is a one-component polyurethane-bitumen resin with high thixotropy and excellent mechanical properties. It is specially designed for the execution of difficult details and finishes in waterproofing projects with asphalt fabric and other membranes, guaranteeing the continuity and tightness of the system. It has high adhesion to different types of supports, especially to asphalt fabric (bitumen finish). Also recommended for waterproofing foundations. Resistant to root penetration.

Protection and repair of concrete according to European standard EN-1504-2. Root penetration resistance certified.

Colour	kg
Black	5
Black	25
Consumption:	Approx. 1 kg/m ² .

IMPERMAX GC



DATA SHEET

Impermax GC is a thixotropic single-component polyurethane-bitumen resin. When it cures, forms a highly elastic waterproofing membrane.

It is specially designed for the waterproofing of foundations. It is applied in a single thick layer over a vertical or horizontal concrete porous surface, directly, without the need of a primer. May be applied over dry or wet concrete (without standing water).

Root penetration resistance certified.

Colour	kg
Black	5
Black	25
Consumption:	2-3 kg/m ² in one single layer (horizontal).

SINGLE COMPONENT, COLD APPLIED ACRYLIC WATERPROOFING

ACRIMPER



DATA SHEET

Elastic and weather resistant acrylic rubber with excellent adhesion.

Application:

The product is suitable for waterproofing of:

- Sloped roofs and terraces (without standing water).
- Chimney joints.
- Cantilevers.

Protection and repair of concrete according to European standard EN 1504-2. Products and systems for the protection and repair of concrete structure. (Anti-carbonation coating for concrete).

Avoid applying the product on surfaces with stagnant water.

Colour	kg
White	22,5
Grey light/dark	
Tile/ Iron oxide	
Consumption:	Approx. 1,5-2,5 kg/m ² in several layers, with Geomax or Rayston Fiber 150 reinforcement.
Notes:	For other colours: please check with the sales office for minimum order and price.

SINGLE COMPONENT, COLD APPLIED WATER BASED PU WATERPROOFING

IMPERMAX AQUA

[DATA SHEET](#)

Water based, single component hybrid aliphatic polyurethane membrane for roof waterproofing. Easy to apply and with a high thixotropy. Once cured, Impermax Aqua has higher performance levels than other water based membranes.

Protection and repair of concrete according to European standard EN 1504-2. Products and systems for the protection and repair of concrete structure. (Anti-carbonation coating for concrete).

Colour	kg
White	22,50
Grey light/dark	
Tile/ Iron oxide	
Consumption:	2 kg/m ² in two layers (on horizontal and vertical surfaces) with Geomax or Rayston Fiber 150 reinforcement.

TWO COMPONENT, COLD APPLIED POLYURETHANE WATERPROOFING SOLVENT FREE

IMPERMAX AQUA 2K

[DATA SHEET](#)

Solvent-free polyurethane. Totally stable in contact with water, even when submerged. It fulfills the health criteria for water intended for human consumption. It can be used in new construction and refurbishment of:

- Water tanks and reservoirs (potable, wastewater...).
- Gutters.
- Fish farms.

Certified and regulated by the Directive 98/83 / CE known as DWD (Drinking Water Directive) for human use and consumption, for the continuous containment of drinking water. Protection and repair of concrete according to European standard EN-1504-2.

Colour	kg
Grey RAL 7001	4,5
Grey RAL 7001	21
Consumption:	Approx. 2 kg/m ² .
Notes:	For other colours: please check with the sales office for minimum order and price. Minimum order of 2.000 kg.

IMPERMAX 2K M

[DATA SHEET](#)

Two-component bio-based aromatic polyurethane resin, completely solvent-free. Once cured, it forms a continuous waterproofing membrane, elastomeric and with excellent mechanical properties. Resistant to medium-light pedestrian traffic (without finish). If applied outdoors, it is recommended to protect it with an aliphatic topcoat.

Up to 2 kg/m² can be applied in a single layer, preferably with Geomax reinforcement, using the 'wet-on-wet' system.

The thixotropy of the resin can be increased or the curing time reduced by adding special additives.

Application:

- Waterproofing of roofs.
- Excellent barrier against radon gas.

The IMPERMAX 2K VB reference is a special version with very low water vapor permeability (vapor barrier).

Protection and repair of concrete in accordance with European standard EN 1504-2. Products and systems for the protection and repair of concrete structures.

Colour	kg
Grey RAL 7001	4,5
Grey RAL 7001	21
Consumption:	2 kg/m ² in one single layer.
Notes:	For other colours: please check with the sales office for minimum order and price. Minimum order of 2.000 kg.

TWO COMPONENT, COLD APPLIED POLYUREA WATERPROOFING

IMPERMAX COLD POLYUREA

[DATA SHEET](#)

Membrane based on a two-component, self-leveling, pure aromatic polyurea resin that is solvent-based. Fast curing and highly elastic (ability to bridge over the fissures form the support). Roller applied. Specially designed for flat roof waterproofing.

It is always recommended to protect it with an aliphatic topcoat if it is applied exposed outdoors.

Certificates (roofing) ETE n° 17/0509 and BBA (including "blue roof").

Colour	kg
Red (Iron oxide or tile) – Dark grey (similar to RAL 7011)	26,5
Consumption:	Minimum 2 kg/m ² in one single layer (horizontal support).
Notes:	Other colors are not recommended due to quick yellowing.

IMPERMAX COLD POLYUREA ST

[DATA SHEET](#)

Waterproofing membrane based on a two-component, semi-tixotropic, pure aromatic polyurea resin that is solvent-based. Fast curing and highly elastic (ability to bridge over the fissures form the support). Roller applied. Specially designed for pitched roof waterproofing and details.

It is always recommended to protect it with an aliphatic topcoat if it is applied exposed outdoors.

Certificates (roofing) ETE n° 17/0509 and BBA (including "blue roof").

Colour	kg
Dark grey RAL 7011	26,5
Consumption:	Minimum 2 kg/m ² in one single layer (horizontal support).
Notes:	Other colors are not recommended due to quick yellowing. Minimum order 48 kits.

IMPERMAX COLD POLYUREA SUPREME

[DATA SHEET](#)

Totally solvent free two component polyurea membrane. Highly elastic. Designed for interior and exterior applications (roofs and liquid containment).

Especially recommended when a coating with the mechanical resistance properties of a hot-applied polyurea is required, but a projection machine is not available.

CE mark according EN-1504-2 norm, for the protection of concrete structures. Products and systems for the protection and repair of concrete structures.

Colour	kg
Grey RAL 7001 AND 7011	21
Consumption:	2 kg/m ² in one layer (on horizontal surfaces).
Notes:	For other colours, check minimum order and prices. Minimum order of 3.600 kg.

WATERPROOFING OF MANHOLES BASED ON EPOXY RESINS

IMPERMAX EP

[DATA SHEET](#)

Two-component epoxy resin, very high thixotropy, 100% solids, compatible with wet concrete substrates (not standing water) and with high chemical resistance in continuous contact with wastewater. Specially designed as an interior lining of manholes and other structures, especially buried and without support movements.

Colour	kg
Grey	15
Consumption:	Approx. 1-2 kg/m ²

HOT SPRAY APPLIED WATERPROOFING

POLYUREA RAYSTON



DATA SHEET

Pure polyurea-based system, with slightly slower curing, less exothermic reaction, and less shrinkage compared to typical formulations (100% pure polyureas). This way, the polymer cures by creating a coating with lower internal stresses, making it particularly suitable for the protection and waterproofing of complex geometry surfaces in high-demand projects.

The cured coating offers excellent chemical resistance and high mechanical properties. CE marked according to EN-1504-2 standard for the surface protection of concrete. ETA certifications according to EAD 030350-00-0402 (No. 16/0148) and BBA certification (No. 18/5582) for 25 years (roofs). Complies with the water quality criteria for human consumption, WRAS certified according to BS6920 1:2000 No. 2208579/2014.

Polyurea Rayston Fast is the fast-curing version, recommended for vertical or steep structures to prevent resin sagging.

Application:

- Concrete waterproofing.
- Waterproofing and protection of concrete structures, especially those with complex geometry.
- In-situ applied liners, fully continuous, for primary and secondary containment, ponds, landfills, canals, leachate tanks, pools, etc.
- Urban and industrial potable and wastewater facilities. Desalination plants.
- Cubiertas, balcones, terrazas, cubierta de parking.
- Stadium stands.

Protective topcoat is required if the coating is exposed to UV rays to ensure colour stability.

It is necessary to apply a final aliphatic protective coat if exposed to UV rays, in case color stability is required.

This product is suitable for non-adhered application in a floating system, in combination with GEOMAX SPRAY NMDC.

Colour	kg
Grey 7011-7011 - Blue	40
Grey 7011-7011 - Blue	420
Consumption:	1,8 - 2 kg/m ² for a thickness of 1,9 - 2 mm.
Notes:	For other colours: please check with the sales office for minimum order and price.

POLYUREA RAYSTON P



DATA SHEET

Last generation pure polyurea system. When it cures, it forms an elastomeric membrane with greater strength than other traditional pure polyurea formulations.

The two liquid components have a perfect viscosity compensation.

Application:

Waterproofing of roofs and water retention structures.

Colour	kg
Grey - beige - tile - blue	40
Grey - beige - tile - blue	420
Consumption:	1,8 - 2 kg/m ² for a 1,9 - 2 mm thick layer.
Notes:	-

POLYUREA RAYSTON A



DATA SHEET

Pure aliphatic elastomeric polyurea system, with a high capacity to bridge cracks and movements in the substrate. High stability when exposed to the outdoors; it does not yellow, and it has excellent color retention, gloss, and aesthetic appearance when exposed to sunlight.

Its use allows for the elimination of a stage in the waterproofing process (application of the aliphatic protective finish), reducing costs and the time to put the project into service.

Application:

Waterproofing and protection of structures and materials exposed to the outdoors (roofs, polyurethane foam protection, concrete protection, etc.).

CE marked according to EN-1504-2..

Colour	kg
White - blue (RAL 5015)	40
White - blue (RAL 5015)	420
Consumption:	2 kg/m ² minimum.
Notes:	For other colours: please check with the sales office for minimum order and price.

RAYSTON SPRAY D50



DATA SHEET

Pure polyurea membrane with a very high cross-linking density, both hard and highly elastic. Thanks to this unique molecular structure, the coating is highly impermeable to gases, with excellent chemical resistance and mechanical properties (puncture, compression, tensile strength, impact, abrasion, etc.). Good electrical insulator. Resistant to both high and very low temperatures.

Application:

- Barrier against the radioactive gas Radon and other gases (methane, carbon dioxide, etc.).
- Building foundations. Protective barrier for human health against harmful gases from the ground.
- Water management. Waterproofing and protection of tanks containing aqueous solutions, even with the presence of aggressive chemical elements. Channeling and primary and secondary containment. Wastewater treatment plants (industrial and urban). Biogas digesters. Desalination plants. Leachate containment. Process water in industries.
- Electrical insulation of structures.

This product is suitable for non-adhered application in a floating system, in combination with GEOMAX SPRAY NMDC.

Marcado CE según EN-1504-2.

Colour	kg
Grey - beige - tile red	40
Grey - beige - tile red	420
Consumption:	1,8 - 2 kg/m ² for a 1,9 mm thick layer.
Notes:	For other colours: please check with the sales office for minimum order and price.

RAYSTON FIRE E



DATA SHEET

Membrane of an elastomeric nature, with great ability to bridge cracks in the support, applied with a 1: 1 ratio machine in volume, based on a pure polyurea with great resistance to fire and in the event of fire the product will not contribute to the spread of fire.

Reaction to fire: Euroclass, Bs2d0.

Application:

Protection and waterproofing of structures that require a coating with excellent fire resistance: stadium bleachers, tunnels, etc.

Colour	kg
Grey	434
Consumption:	1,5 - 2 kg/m ² .

IMPERMAX POLYUREA H



DATA SHEET

Economical hybrid polyurea system that offers an optimal balance between cost and mechanical resistance properties.

ETA 11/062, for 10 years (W2, without aliphatic protective finish) and 25 years (W3, with aliphatic protective finish). Certified for root penetration resistance (green roofs).

Hail resistance certification according to EN-13583.

Application:

Waterproofing and protection of exterior structures in general, concrete and metal substrates, roofs, parking decks, green roofs, stadium stands, protection of polyurethane insulation foam.

Requires a final aliphatic protective coat to ensure color stability.

Colour	kg
Grey - beige - tile	40
Grey - beige - tile	420
Consumption:	1,8 - 2 kg/m ² for a 1,9mm thick layer.
Notes:	Standard colours: Grey 7011, Beige 1001, Tile Red. For other colours: please check with the sales office for minimum order and price.

IMPERMAX POLYUREA H FLEX



DATA SHEET

Highly elastic, fast-curing hybrid polyurea system. Contains more than 50% pure polyurea. ETA certified according to EAD 030675-00-0107 (No. 21/0740) for bridge deck waterproofing.

Hail resistance certification according to EN-13583.

Impermax Polyurea H Flex Fast is the fast-curing version, recommended for vertical or steep structures to prevent resin sagging.

Application:

- Waterproofing of bridge and viaduct decks (railway and road).
- Waterproofing of roofs and parking decks.
- Waterproofing and protection of structures (concrete, metal, etc.), especially those exposed to the outdoors. Protection of polyurethane insulation foam.

In applications where the membrane is exposed, a final aliphatic protective coat is required to ensure color stability.

Colour	kg
Grey - beige - tile	40
Grey - beige - tile	420
Consumption:	1,8 - 2 kg/m ² for a 1,9mm thick layer.
Notes:	Standard colours: Grey 7011, Beige 1001, Tile Red. For other colours: please check with the sales office for minimum order and price.

IMPERMAX POLYUREA H FLEX ALUM



DATA SHEET

Impermax Polyurea H Flex Alum is a 2-component polyurea resin, which cures very fast.

This product can only be applied by 2-component spraying equipment.

Impermax Polyurea H Flex Alum is version of Impermax Polyurea H Flex that contains special aluminum pigments that give it a better UV stability and colour fastness. No need to apply a topcoat over it.

Colour	kg
Grey aluminium	40
Grey aluminium	400
Consumption:	1,8 - 2 kg/m ² for a 1,9mm thick layer.
Notes:	Check minimum order.

IMPERMAX POLYUREA H FLEX BRONZE



DATA SHEET

Impermax Polyurea H Flex Bronze is a 2-component polyurea resin, which cures very fast.

This product can only be applied by 2-component spraying equipment. It is always supplied already pigmented.

Application:

Roof waterproofing. Suitable when a metallic appearance is required. Or it is needed to save the application of an aliphatic topcoat (in order to reduce costs, for example).

Impermax Polyurea H Flex Bronze is a version of Impermax Polyurea H Flex that contains special metallic pigments that give it an improved UV stability and colour fastness. No need to apply a protective aliphatic topcoat over it.

Colour	kg
Bronze	40
Bronze	400
Consumption:	1,8 - 2 kg/m ² for a 1,9 mm thick layer.

IMPERMAX POLYUREA H SUPREME



DATA SHEET

Hybrid elastomeric polyurea system with low viscosity and fast catalysis.

Its **VERY HIGH ELASTICITY** of up to 650% makes it the ideal membrane for the protection and waterproofing of surfaces and structures with extreme substrate movement. CE marking.

Application:

- Waterproofing projects for exposed structures and roofs on substrates such as concrete, metal, wood, glass fiber reinforced polyester, old bituminous felts, and other prefabricated membranes, etc.
- Protection of polyurethane insulating foam.
- Requires a final aliphatic protective coat to ensure color stability.

Colour	kg
Grey - beige - tile	40
Grey - beige - tile	420
Consumption:	1,8 - 2 kg/m ² for a 1,9 mm thick layer.
Notes:	For other colours: please check with the sales office for minimum order and price.

IMPERMAX 2K



DATA SHEET

Fast curing, two component **biobased and eco-friendly** polyurethane system able to bridge over the fissures from the support.

ETA 10/0296, 25 years (W3). Certificate of resistance to root penetration (green roofs). Certificate of asbestos fiber encapsulation.

Application:

General waterproofing, concrete and metal structures, parking deck roofs, green roofs, asbestos encapsulation.

This product requires a final aliphatic protective coating.

Colour	kg
Grey - beige - tile	40
Grey - beige - tile	420
Consumption:	1,8 - 2 kg/m ² for a 1,9mm thick layer.
Notes:	Standard colours: Grey 7011, Beige 1001, Tile Red. For other colours: please check with the sales office for minimum order and price.

POLYUREA RAYSTON X5



DATA SHEET

Expandable polyurea that forms an elastic and flexible membrane. Expands to 3-5 times its original volume. Whitish colour.

Application:

- Can be used as a primer for irregular and dry surfaces like corrugated metal, fibrocement, bitumen felt or concrete.
- Low cost waterproofing system for roofs without traffic (must be protected with an aliphatic top coat though). **Asbestos encapsulation certificate.**
- As cushioning layer against impact on floors.
- Sound impact reduction on floors and roofs.

CE mark.

Colour	kg
White	40
White	420
Consumption:	1-2 kg/m ² for 5-10 mm thickness.

ALIPHATIC POLYURETHANE TOP COATS

IMPERTRANS



DATA SHEET

Single component aliphatic polyurethane resin that, once cured, forms a highly elastic continuous coating with excellent mechanical, UV and outdoors resistance. It can be either supplied colorless or colored (standard reflective white and grey similar to RAL 7001, semi-gloss appearance). Alternatively, the colorless version can be pigmented in situ with suitable color pastes (see PU Pigments) when a small amount of specific coloured resin or a large due date of the resin is required (gloss appearance).

Application:

Protective topcoat for liquid-applied waterproofing membranes (always pigmented). Designed for non-trafficable roofs or with light pedestrian traffic. It can be applied by roller, brush or airless machine (in this case pigmented). Finish for exterior decorative ponds and lakes with fish.

Colour	kg
Colorless	4
Colorless	20
Pigmented (reflectance white or grey 7001)	6
Pigmented (reflectance white or grey 7001)	25
Consumption:	Approx 200-500 g/m ² in one or several coats.
Notes:	Minimum order for pigmented Impertrans: 1,200 kg. For other colours: please check with the sales office for minimum order and price.

COLODUR



DATA SHEET

Single component aliphatic polyurethane resin that, once cured, forms a continuous, hard, elastic and flexible coating with excellent mechanical, chemical (wastewater, salty water...), UV and outdoors resistance. Very good scratch and wear resistance. It can be either supplied colorless or colored (standard reflective white and grey similar to RAL 7001, semi-gloss appearance). Alternatively, the colorless version can be pigmented in situ with suitable color pastes (see PU Pigments) when a small amount of specific coloured resin or a large due date of the resin is required (gloss appearance)

Application:

Protective topcoat for liquid-applied waterproofing membranes (always pigmented). Can be applied on roofs, balconies, terraces, stadium stands... with heavy pedestrian traffic and on parking decks with light vehicular traffic. It can be applied with a roller, brush, or airless machine (in this case, pigmented). It can be combined with anti-slip additive or aggregate to achieve non-slip finishes.

It is also suitable as a protective finishing layer for liquid containment structures (continuous immersion).

Colour	kg
Colorless	4
Colorless	20
Pigmented (reflectance white or grey 7001)	6
Pigmented (reflectance white or grey 7001)	25

Consumption:	Approx. 200-500 g/m ² in one or several coats.
Notes:	For other colours: please check with the sales office for minimum order and price.

PAINTCHLORE



DATA SHEET

Aliphatic, single-component polyurethane resin that, once cured, forms a continuous, hard, yet also elastic and flexible coating with excellent mechanical and chemical resistance (resistant to wastewater, saltwater...), UV, and weather resistance.

It exhibits good resistance to abrasion and scratching. Resistant to continuous water immersion. It is always supplied clear. It can be pigmented on-site with color pastes (see PU Pigments), achieving a glossy appearance coating.

Application:

Protective finish for liquid-applied waterproofing membranes (always pigmented) in structural projects (leisure or decorative), conduits, and water containment (neutral, saline, slightly alkaline, or acidic...). A minimum of two crossed layers will be applied to ensure complete coverage of the previous layer.

Colour	kg
Colorless	4
Colorless	20

Consumption:	Approx. 200-500 g/m ² in several crossed coats.
--------------	--

PAINTCHLORE 2K



DATA SHEET

Two-component acrylic polyurethane hybrid resin, highly cross-linked with an aliphatic isocyanate, that once cured, forms a continuous coating, with excellent mechanical, UV, outdoors and chemical resistance (salt water, chlorinated...). Resistant to continuous immersion in water, even chlorinated. Always supplied colored. When cured, a hard coating with a shiny appearance is obtained.

Application:

Protective topcoat for liquid-applied waterproofing membranes (always pigmented) in conduction and containment projects, with salty or chlorinated water. A minimum of two crossed layers has to be applied to ensure complete coverage of the previous coat. Chlorine being a powerful bleaching agent, there is a risk that Paintchlore 2K supplied in colors other than white will change its color in continuous contact with water with excessive concentration of chlorine.

Colour	l
White - blue	20

Consumption:	Approx. 200-500 g/m ² in several crossed coats.
Notes:	For other colours: please check with the sales office for minimum order and price.

ALIPHATIC WATER BASED POLYURETHANE TOP COATS

IMPERTRANS ECO


[DATA SHEET](#)

Two-component waterborne aliphatic polyurethane resin that, once cured, forms a continuous elastic coat, with excellent mechanical, UV and outdoors resistance. It can be applied by roller, brush or airless machine. It is always supplied pigmented, obtaining a semi-gloss appearance. Resistant to medium-light pedestrian traffic.

Application:

Protective topcoat for liquid-applied waterproofing membranes for pitched roofs, specially for cold-applied and hot-applied solventless waterproofing membranes, when a complete solvent-free waterproofing solution is requested for all the steps of the process.

One or two protective layers of Impertrans Eco increases the resistance to ponding of single-component waterborne resins such as Acrimper or Impermax Aqua.

Colour	kg
White - grey	4
White - grey	15
Consumption:	Approx. 200-500 g/m ² in several layers
Notes:	For other colours: please check with the sales office for minimum order and price.

ALIPHATIC POLYASPARTIC TOP COATS COLD APPLIED

IMPERTOP FAST 2K


[DATA SHEET](#)

Aliphatic top coat for liquid applied waterproofing membranes. Two component product based on quick curing polyaspartic resins, with good chemical, wear, UV and weather resistance. Its elasticity and flexibility avoid cracking. Colourless or pigmented. Must be used in the pigmented version when used as an aliphatic top coat.

Application:

Designed as a protective aliphatic topcoat for waterproofing membranes where a quick curing system is required.

Colour	kg
Colorless	5
Colorless	15
Pigmented	5
Pigmented	15
Consumption:	One or two layers of 200-500 g/m ² per layer.
Notes:	For other colours: please check with the sales office for minimum order and price.

IMPERTOP FAST FLEX / FAST FLEX S



Two components aliphatic polyaspartic liquid topcoat, with very low solvent content (non-flammable, non-ADR). Hard and flexible elastomer. More competitive price than other polyaspartic resins.

Impertop Fast Flex S it is a slower curing version designed to be applied in summer, with higher temperatures.

Application:

Protective finish in waterproofing systems with polyurethane or polyurea membranes. This coating is specially designed for terraces and balconies that need immediate back to service.

Impertop Fast Flex

[DATA SHEET](#)

Impertop Fast Flex S

[DATA SHEET](#)

Colour	kg
Pigmented	5
Pigmented	15
Colorless	4
Colorless	11
Consumption:	One or several layers of 0,3 kg/m ² each.
Notes:	Standars colours grey 7001. For other colours: please check with the sales office for minimum order and price.

POLYURETHANE INJECTION RESINS

AQUAPUR


[DATA SHEET](#)

Polyurethane injection resin for stopping of waterways. Reacts quickly with water forming a semi-rigid foam. Phthalate-free product. Free expansion up to 18 times the initial volume. Requires Aquapur Accelerator. (1/25).

CE mark according to EN-1504-5.

Application:

- Water ways
- Collector joints, gutters, etc.
- Underground constructions (tunnels, subways, etc.) Waterproofing of wells and galleries, repairing of concrete cracks. Waterproofing of expansion joint in dams, tanks, etc.

	kg
-	25
-	200



AQUAPUR ACCELERATOR

Minimum format: 12 kits of 1 kg.

	kg
-	1
-	20

AQUAPUR FLEX


[DATA SHEET](#)

Single component (despite the addition of the accelerator AQUAPUR Flex). Free expansion up to 10 times the initial volume. The product forms an elastic foam, and maintains its elasticity in time without shrinkage. The resulting foam may be in contact even with corrosive elements. Solvent- and phthalate-free.

Application:

- Filling joints and cracks in concrete structures subject to movement.
- Filling joints, cracks and voids in concrete structures where you can not avoid free foaming.
- Filling cracks of significant size in horizontal structures, where the crack needs to be filled down to the bottom.

CE Marking as per EN1504-5 (Injection systems for concrete repair and protection).

	kg
-	25
-	200



AQUAPUR FLEX ACCELERATOR

Minimum format: 12 kits of 1 kg.

	kg
-	1
-	20

ACCESSORIES FOR INJECTION RESINS

PRODUCT	ud./box	RRP box/ud.	DESCRIPTION
Rayston Injection tube RI	ml.	CONSULT	Micro perforated in virgin P.V.C.; for Fuko injection systems
Hose Clamp (plastic)	ud.	CONSULT	Plastic clips
Plastic injection Hose Connectors	ud.	CONSULT	Connectors for tubes
Blue inlet hose	ml.	CONSULT	Blue tube for resin delivery
Clear outlet hose Mono Shutter	ml.	CONSULT	Transparent tube (exit)
Connector (MSC) Duo Shutter	ud.	CONSULT	Simple plug
Connector (DSC)	ud.	CONSULT	Double plug
PACKER-AC - 110 mm Ø16 mm	20	CONSULT	Metallic Packer
PACKER-AC - 160 mm Ø16 mm	20	CONSULT	Metallic Packer
PACKER-MC - 110 mm Ø16 mm	20	CONSULT	Metallic Packer
PACKER-MC - 160 mm Ø16 mm	20	CONSULT	Metallic Packer
PACKER-BC - 100 mm Ø13 mm	20	CONSULT	Metallic packer with grooved rubber
CONNECTOR-PCC	1	CONSULT	Connector for Packer with conical head with anti come back valve.
CONNECTOR-PCB35	1	CONSULT	Packer connector button head 16mm Ø 3,5mm
Ex Works Prices	Check for availability and minimum order.		



SELF-LEVELLING PRODUCTS

HIGH PERFORMANCE HOT
SPRAY-APPLIED

HIGH PERFORMANCE
TECHNICAL PU CEMENT
MORTARS

TOP COATS & HIGH REACTIVITY
TOP COATS

EPOXY TOP COATS

STONE BINDERS

QUARTZ SAND NATURAL,
PIGMENTED AND MIXED

DECORATIVE AGGREGATES FOR
DRAINABLE SYSTEMS

PIGMENTS

DECORATIVE FLAKES

RUBBER BINDERS

RECYCLED RUBBER FOR
SYNTHETIC FLOORING

PRODUCT RANGE

Flooring

www.kryptonchemical.com



SELF-LEVELLING PRODUCTS

PAVIFLOOR


[DATA SHEET](#)

Self-levelling, 100% solids polyurethane resin which provides a semi rigid and resistant coating for indoor application. Solvent free. Good resistance to abrasion and scratching. Requires aliphatic top coat (eg Colodur eco).

Application:

Homes, warehouses and industrial factories, garages and car parks, walkways, Offices, Bars / Restaurants, Rooms in hospitals / clinics / residential, commercial zones.

Certified according to EN 13813:2003.

Fire classification EN 13501-1:2018.

Colour	kg
Light grey RAL 7001	5
Light grey RAL 7001	25
Consumption:	Approx. 3 kg/m ² for a thickness of 2mm.
Notes:	For other colors, please consult the sales office: minimum order of 1,400 kg, price +5%.

PAVISOFT


[DATA SHEET](#)

Self-levelling, 100% solids polyurethane resin which provides a flexible resilient and resistant coating for indoor application. Solvent free. Good resistance to abrasion and scratching. Requires aliphatic top coat (eg Colodur eco). Ideal for confort flooring applications and asphalt reburbishment.

Application:

Homes, Halls, Offices, Bars / Restaurants, Rooms in hospitals / clinics / nursing homes, commercial areas, car park refurbishment (product can be applied directly to asphalt pavement). Comfort flooring solutions.

Certified according to EN 13813:2003.

Fire classification EN 13501-1:2018.

Colour	kg
Light Grey RAL 7001	5
Light Grey RAL 7001	25
Consumption:	Approx. 3kg/m ² , for a thickness of 2mm.
Notes:	For other colors, please consult the sales office: minimum order of 1,400 kg, price +5%.

EP NIVEL / EP NIVEL CLEAR


[DATA SHEET](#)

Two component, pigmented or transparent, self-levelling epoxy coating for concrete protection.

Self-levelling flooring. 2-3mm can be applied in one layer. For concrete surfaces which are subjected to high mechanical wear and compression in all types of indoor areas.

Application:

Especially designed for a use in dry zones due to its smooth, glossy finish which is easy to clean.

- Warehouses.
- Factories.
- Parkings.

It can be used as a primer for all application layers of multilayer or self-levelling systems. The different options will depend on the use of application systems, mixtures of aggregate and pigmentation.

Colour	kg
Colour 1	25
Colour 2	25
Clear	15
Consumption:	Apply 3-4 kg/m ² (resin + 0-0,3 Quartz Sand) by 5mm notched trowel for a 2mm thick coating.
Notes:	Colour 1: 3009, 6002, 7001, 7004, 7011, 7035, 9005, white. Colour 2: 1014, 2010, 3002, 5015, 5017, 8024, signal yellow. For other colors, please consult the sales office: minimum order of 200 kg, price +5%.

HIGH PERFORMANCE HOT SPRAY-APPLIED

PROJECTED SYSTEMS FOR FLOORING

POLYUREA H SL


[DATA SHEET](#)

Polyurea H SL is a two component modified polyurea resin which is applied by mechanical projection. Though it is still a fast-curing product, it is slower and much more self-levelling than other hot spray applied resins. The result is a seamless, elastic coating with a smooth finish.

Application:

- Car parks.
- Industrial floors.

The slow curing of this product allows sand/ aggregate broadcasting between 2 layers, to obtain a rough/ anti-skid finish.

Colour	kg
Grey - beige - tile red - blue	40
Grey - beige - tile red - blue	400
Consumption:	1,8 - 2 kg/m ² for a thickness of 1,9 mm.
Notes:	For other colours: please check with the sales office for minimum order and price.

RAYSTON FLOOR D50 FR


[DATA SHEET](#)

Rayston Floor D50 FR is a fast curing two-component polyurea resin for the application of continuous pavement membranes, with fire re-sistance properties. Ideal for use in indoor and outdoor car parks.

Allows for extremely fast, efficient applications in new or existing car parks.

Excellent mechanical properties: puncture resistance, crack bridge, tensile, elongation, etc.

Colour	kg
Grey - tile red - beige - green - iron oxide - white	40
	420

Consumption:	1,5 - 2 kg/m ² for a thickness between 1,5 and 2 mm.
Notes:	For other colours: please check with the sales office for minimum order and price.

RAYSTON FLOOR D40 FR


[DATA SHEET](#)

Rayston Floor D40 FR: is a polyurea resin, applied with a hot spray machine, completely solvent-free, and free of mineral fillers. Once cured, it forms a completely seamless coating (without joints or overlaps), with high mechanical strength and resistance to external factors. It is thermoset and elastomeric, with the ability to bridge potential cracks in the substrate. The membrane cures in a few seconds, and it can be put into service within a few hours.

- Coating for concrete or metallic floors, always using a suitable primer.
- Protection of concrete structures in floors, especially those exposed to the external environment.
- It has the fire classification Bfl-S1.

Colour	kg
Grey - tile - blue - beige - green - oxide red - white	40
Grey - tile - blue - beige - green - oxide red - white	400

Consumption:	1,5 - 2 kg/m ² for a thickness between 1,5 and 2 mm.
Notes:	For other colors, please consult the sales office: minimum order of 400 kg, price +5%.

HIGH PERFORMANCE TECHNICAL PU CEMENT MORTARS

RAYCRETE SL (SELF-LEVELING)


[DATA SHEET](#)

Cementitious polyurethane system for applications where thermal shock resistance is needed chemical resistant. Three liquid components (A+B+pigment) and one mineral filler.

Raycrete SL is supplied non-pigmented, available in different colours.

Application:

- Food industry
- Food processing facilities. Kitchens.
- Pharmaceutical and chemical industry
- Vehicle maintenance, electroplating and any area of heavy use.

Certified according to EN 13813:2003. Fire reaction classification according to EN 13501-1:2007. Compressive and flexural strength, UNE-EN 13892-2:2003. Determination of flexural properties, UNE-EN ISO 178:2003. Determination of liquid water permeability, UNE-EN 1062-3:2008. Determination of thermal expansion, UNE-EN 1770:1999. Determination of water vapour permeability, UNE-EN 12086:2013. Antimicrobial activity according to JIS Z 2801:2010 (ISO 22196)

Colour	kg
Grey, blue, red	20,6

Consumption:	7 kg/m ² for a final thin of 4 mm. Check TDS for more values.
Notes:	For other colors, please consult the sales office: minimum order of 400 kg, price +5%.

SINGLE COMPONENT, ALIPHATIC POLYURETHANE TOP COAT

FLOORTOP 1K


[DATA SHEET](#)

Single component aliphatic polyurethane resin. Lightly elastomeric, flexible and hard coating. Resistant to abrasion, UV rays, atmospheric agents and chemical aggressions of the products that are normally used in car park maintenance. The colourless product version can be tinted in RAL colours using pigment pastes.

Application:

Protective finish for heavy traffic flooring. Car parks, tanks, epoxy, cement floors (humidity <4%).

Certified according to EN 13813:2003. Fire classification EN 13501-1:2018.

Colour	kg
Colorless	4
	20
Pigmented	6
	25

Consumption:	Aprox. 200-500 g/m ² .
Notes:	Pigmented version available in RAL 7001 and white. For other colours: please check with the sales office for minimum order and price.

TWO COMPONENT, ALIPHATIC POLYURETHANE TOP COATS

COLODUR ECO RANGE

The COLODUR ECO range has been developed not only to meet the highest quality standards but also to respect the environment. Its formulation provides exceptional fire resistance.

Additionally, it has an indoor environment classification of Class A according to the determination of volatile organic compound emissions from building products and furniture: emission testing chamber method, and is certified according to EN 13813:2003.

COLODUR ECO


[DATA SHEET](#)

Water-soluble two-component aliphatic polyurethane resin that produces a hard and flexible coating at the same time.

Brilliant aspect: High resistance to abrasion and chemical agents. Excellent protection of the surface in floors subject to intense wear. Does not yellow when exposed to UV rays. Suitable for indoor and outdoor use, as well as in public areas.

Available in clear or pigmented for finishing:

- Garage flooring, parking areas with heavy traffic.
- Microcement, artistic pavements.
- Cement, epoxy and polyurethane pavements, cement-based self-leveling mortar.

Colour	kg
Colorless	4
	15
Pigmented	4
	15

Consumption:	Máx. 200-300 g/m ² (by hand) at least 2 or 3.
Notes:	Colour 1: 3009, 6002, 7001, 7004, 7011, 7035, 9005, white. Colour 2: 1014, 2010, 3002, 5015, 5017, 8024, signal yellow. For other colors, please consult the sales office: minimum order of 105 kg, price +5%.

COLODUR ECO MATT


[DATA SHEET](#)

Two-component aliphatic polyurethane resin soluble in water that produces a hard and flexible coating at the same time.

Matt aspect: High resistance to abrasion and chemical agents. Excellent surface protection for floors subject to heavy wear. Does not yellow when exposed to UV rays. Suitable for indoor and outdoor use, as well as in public areas.

Available in clear or pigmented for finishing:

- Garage flooring, heavily trafficked parking areas.
- Microcement, artistic flooring.
- Cement, epoxy and polyurethane flooring, self-leveling cement-based mortar.

Colour	kg
Colorless	4
	15

Consumption:	Maximum 150-200 g/m ² (per hand) at least 2 hands.
--------------	---

COLODUR ECO SATIN



DATA SHEET

Two-component aliphatic polyurethane resin soluble in water that produces a hard and flexible coating at the same time.

Satin: High resistance to abrasion and chemical agents. Excellent surface protection for floors subject to heavy wear. Does not yellow when exposed to UV rays. Suitable for indoor and outdoor use, as well as in public areas.

Available in clear or pigmented for finishing:

- CLS garage flooring, heavily trafficked parking areas.
- Microcement, artistic flooring.
- Cement, epoxy and polyurethane flooring, self-leveling cement-based mortar.

Colour	kg
Colorless	4
	15
Consumption:	Maximum 150-200 g/m ² (per hand) at least 2 hands.

HIGH REACTIVITY TOP COATS

KRYPTANATE M



DATA SHEET

Solvent based, two component polyaspartic system for surface protection. Kryptanate M is fast curing, even at low temperatures, and provides good adhesion and high resistance against abrasion.

Applications:

Industrial, marine and architectural solutions. Top coat in flooring systems. It can be applied by roller and airless equipment (see Data Sheet).

Colour	kg
Colorless	4,5
	13,3
Pigmented	5
	15
Consumption:	Recommended thickness: 200-500 microns. 2 layers of 200g/m ² each.
Notes:	Colour 1: 3009, 6002, 7001, 7004, 7011, 7035, 9005, white. Colour 2: 1014, 2010, 3002, 5015, 5017, 8024, signal yellow. For other colors, please consult the sales office: minimum order of 105 kg, price +5%.

KRYPTANATE M FLEX



DATA SHEET

Kryptanate M Flex is a flexible 2-component, slow reactivity polyaspartic, that, unlike usual polyurea systems, it can be mixed and manually applied due to its moderated reaction speed while retaining a fast curing profile once applied. It is delivered in colourless or pigmented versions.

Applications

Industrial, marine and architectural solutions. Top coat in flexible comfort flooring systems.

It can be applied by roller and airless equipment (see Data Sheet).

Colour	kg
Colorless	4
	15
Pigmented	5
	15
Consumption:	200 - 600 g/m ² for a thickness of 200 - 500 microns.
Notes:	Colour 1: 3009, 6002, 7001, 7004, 7011, 7035, 9005, white. Colour 2: 1014, 2010, 3002, 5015, 5017, 8024, signal yellow. For other colors, please consult the sales office: minimum order of 105 kg, price +5%.

KRYPTANATE 100



DATA SHEET

Solvent free, aliphatic, two component polyaspartic system. Its slow reaction allows hand mixing and application, but the curing time is much shorter than with two component polyurethane systems.

Applications

Fast curing even at low temperatures. Good adhesion. High mechanical properties and resistance. Non yellowing.

High thickness coatings can be achieved in only one pass.

Provides multilayer flooring in combination with coloured Quartz Sand and decorative flakes.

Colour	kg
Colorless	4,6
	14
Pigmented	5
	15
Consumption:	Between 200 g/m ² and 1000 g/m ²
Notes:	Colour 1: 3009, 6002, 7001, 7004, 7011, 7035, 9005, white. Colour 2: 1014, 2010, 3002, 5015, 5017, 8024, signal yellow. For other colors, please consult the sales office: minimum order of 105 kg, price +5%.

KRYPTANATE 100 FLEX / FLEX S



Solvent free, flexible, aliphatic, two component polyaspartic system. Its slow reaction allows hand mixing and application, but the curing time is much shorter than with two component polyurethane systems.

Kryptanate 100 Flex S: Version designed to be applied in summer, when temperatures are higher.

Applications

- Home garages, kitchens and bathrooms.
- Public service rooms.
- As an aliphatic top coat on flexible systems.

Kryptanate 100 Flex

Kryptanate 100 Flex S

DATA SHEET

DATA SHEET

Colour	kg
Colorless	5
	15
Pigmented	5
	15
Consumption:	Between 200g/m ² and 1000g/m ²
Notes:	Colour 1: 3009, 6002, 7001, 7004, 7011, 7035, 9005, white. Colour 2: 1014, 2010, 3002, 5015, 5017, 8024, signal yellow. For other colors, please consult the sales office: minimum order of 105 kg, price +5%.

KRYPTANATE 100 LV



DATA SHEET

Kryptanate 100 LV is a 100% solids, low viscosity, two component polyaspartic system that, opposite to usual polyurea systems, has a gel time and a curing speed slow enough to allow manual application, while retaining a curing time still shorter than usual two-component polyurethane systems. Kryptanate 100 LV is delivered colourless or pigmented. Main applications include flooring and multilayer combinations. Fast cure even at low temperatures. Good adhesion

Hard and resistant. Good weathering resistance. Thick layers possible in a single application.

Certified according to EN 13813:2014. Fire classification EN 13501-1:2018.

Colour	kg
Colorless	5
	14
Pigmented	5
	15
Consumption:	Between 200 g/m ² and 1000 g/m ²
Notes:	Colour 1: 3009, 6002, 7001, 7004, 7011, 7035, 9005, white. Colour 2: 1014, 2010, 3002, 5015, 5017, 8024, signal yellow. For other colors, please consult the sales office: minimum order of 105 kg, price +5%.

EP COAT 100 / EP COAT 100 CLEAR


[DATA SHEET](#)

100% solid epoxy paint for extra thick coatings.

Applications

For both smooth (self levelling) and rough (multi-layer/anti-skid) floors. Allows the application of 1mm in one layer.

For industrial and commercial flooring submitted to heavy loads.

Colour	kg
Colour 1	25
Colour 2	25
Clear	15
Consumption:	Between 200 and 1000g/m ² depending on the system
Notes:	Colour 1: 3009, 5015, 6002, 7001, 7004, 7011, 7035, 9001, 9003. Colour 2: 1003, 1014, 2010, 3002, 5017, 8024. For other colors, please consult the sales office: minimum order of 100 kg, price +5%.

EP COAT F


[DATA SHEET](#)

Pigmented epoxy coating for general surface protection in food-contact environments.

Certified after Regulation (EU) No 10/2011 on plastic materials and articles intended to come into contact with food.

Applications

Designed as a general purpose product for food industry, from multilayer systems to topcoat applications

- Floors
- Food tanks
- Food industry floors

Type 1 for simulants A, C and D2.

Type 2 for vertical applications wherever a simulant Type E (Tenax) is required. Check technical data sheet.

Colour	kg
Colour 1	15,2
Colour 2	15,2
Consumption:	Between 200 and 1000g/m ² depending on the system
Notes:	Colour 1: 7001, 1014 and 9003. Colour 2: 7045.

EP AQUACOAT


[DATA SHEET](#)

Two-component, water-based epoxy paint, pigmented for protection of flooring in concrete surfaces. Impermeable to water but permeable to water vapor, which helps to prevent blistering. Available in satin or glossy finish.

Applications

Pigmented coating, sealing concrete floors and walls in all types of indoor areas, as:

- Industrial warehouses and factories
- Car parks
- Public buildings

Note: The product requires good ventilation before, during and after the application to help water evaporation.

Colour	kg
Colour 1	5
	25
Colour 2	5
	25
Consumption:	Several layers of at least 150 g/m ²
Notes:	Colour 1: 3009, 6002, 7001, 7004, 7011, 7035, 9005, white. Colour 2: 1014, 2010, 3002, 5015, 5017, 8024, signal yellow. For other colors, please consult the sales office: minimum order of 100 kg, price +5%.

HIGH PERFORMANCE MONOCOMPONENT POLYURETHANE BINDER

PAVISTONE 1K HV


[DATA SHEET](#)

Aliphatic, single component polyurethane system, used to bind natural stone aggregate in order to obtain a smooth, contemporary and tough floor, which requires low maintenance. The finish can be porous or semiporous, depending on the used aggregates. The surface finish is a seamless, flexible and crack resistant floor.

Applications

- Tree pits
- Paths, ramps, roads, bike lane sand foot bridges.
- Garden decoration
- Pedestrian areas, theme parks and parking zones.
- Commercial areas and offices.
- Raving areas around swimming pools (may require sand/grit broadcasting for anti-skid).

Colour	kg
Check colour and size on page 43	5
	25
	200

Consumption: The required quantity of resin is between 5% and 7% in weight depending on the aggregate particle size.

PAVISTONE 1K AROM


[DATA SHEET](#)

One-component aromatic polyurethane system, to bound natural aggregates in dark or brown tones for pavements. It allows to obtain a smooth, attractive, contemporary, hard floor with a porous or semi-porous finish, depending on the type of aggregate used. The final system is resin bound, drainable system without joints, flexible and resistant to cracking. It is recommended to use only with dark colored aggregate (Brown, beige, dark grey).

Colour	kg
	5
	25
	200

Consumption: From 5% to 7% of weight depending on the aggregate particle size.

TWO COMPONENT POLYURETHANE BINDER

PAVISTONE 2K


[DATA SHEET](#)

Aromatic, two component polyurethane resin. Economical and fast curing. Ideal for binding aggregates for seamless, smooth and decorative floors. The finish can be porous or semiporous, depending on the used aggregates. Aromatic product. It yellows when exposed to UV rays, and is, therefore, best to mix with dark aggregates. (Brown, beige, dark grey).

Applications

Tree pits Paths, ramps, roads, bike lanes and foot bridges. Garden decoration Pedestrian areas, theme parks and parking zones. Commercial areas and offices

Colour	kg
	7

Consumption: 5% and 7% of the aggregate's weight depending on the aggregate particle size.

PAVISTONE 2K UV


[DATA SHEET](#)

Aliphatic, two component polyurethane resin. Stable to UV rays. It's used to bind natural stone in order to obtain a smooth, modern and tough floor, which requires low maintenance. The finish can be porous or semiporous, depending on the used aggregates. The surface finish is a seamless, flexible and crack resistant floor. Aliphatic product. UV stable. Can be used with clear aggregates.

Same applications as Pavistone 1K HV.

Hard and fast curing.

Colour	kg
	6,5

Consumption: 5% and 7% of the aggregate's weight depending on the aggregate particle size.

TWO COMPONENT EPOXY BINDER

PAVISTONE EPOXY UV



DATA SHEET

Transparent, UV stable, two component epoxy resin, for binding natural aggregates in order to obtain a smooth, modern and hard floor, which requires low maintenance. The finish can be porous or semiporous, depending on the used aggregates. The surface finish is seamless.

Can be used with all type of aggregates. May require sand/grit broadcasting for anti-skid).

Swimming pool surroundings.

High chemical resistance.

Low viscosity.

Colour	kg
	5
	15
Consumption:	5% and 7% of the aggregate's weight depending on the particule size.

QUARTZ SAND NATURAL, PIGMENTED AND MIXED

SELECTED QUARTZ

(Color chart in page 40).

	kg/bag
F 0-03 25 kg	25
F 01-03 25 kg	25
F 01-05 25 kg	25
F 03-08 25 kg	25
F 06-1,2 25 kg	25
FC 03-08 25 kg	25
FCM 03-08 25 kg	25

Check delivery time. On request.

CORUNDUM SAND

Corundum is a very hard aggregate, ideal for high wear and friction environment, in industrial flooring and cras park.

	mm	kg/bag
Corundum sand white	0,8	25
Corundum sand white	0,3	25
Corundum sand white	0,1	25






DECORATIVE AGGREGATES FOR DRAINABLE SYSTEMS

NATURAL AGGREGATES

Natural aggregates. It is recommended to buy by full pallets to avoid different shades in the same color. Ideal for urban furniture. (decoration of gardens, avenues, building halls, parking lots, etc.).

Standard package 25 kg For the different prices and formats, consult the technical office.

Round shaped stone for use with the Pavistone system. To achieve a better aesthetic it is advisable to mix the two granulometries offered. Ornamental stone for decoration, landscaping and urban improvements. Ideal for small areas. Garden decoration and treepits ideal in combination with Pavistone. Particule sizes:

				
Coral pink	Salmon	Off-white	Flannel grey	Blueish gray
Ø 2,5 - 5 mm	Ø 2,5 - 5 mm	Ø 2,5 - 5 mm	Ø 2,5 - 5 mm	Ø 2,5 - 5 mm

Exworks prices 40 bags/pallet. Transport cost not included. Orders must be multiple bags. Also available in big bag. Check delivery time. On request.

QUARTZ SAND COLOURS

MONOCOLOR



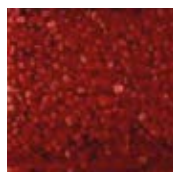
Natural



Yellow



Orange



Garnet red



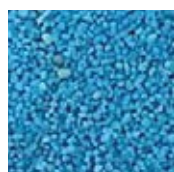
Brown



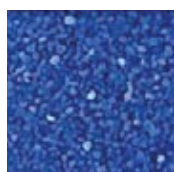
Silver grey



Green



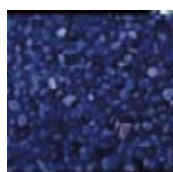
Light blue



Light blue S

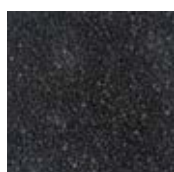


Deep blue



Deep blue S

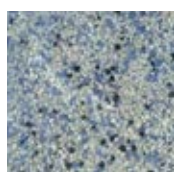
QUARTZ SAND STANDARD COLOURS



N° 1



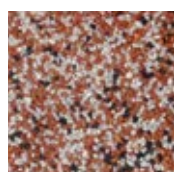
N° 2



N° 3



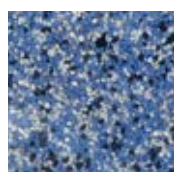
N° 4



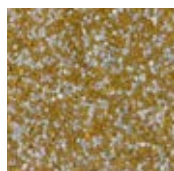
N° 5



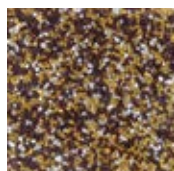
N° 6



N° 7



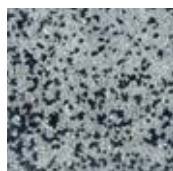
N° 8



N° 9



N° 10



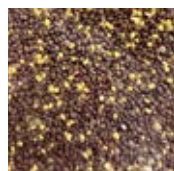
N° 11



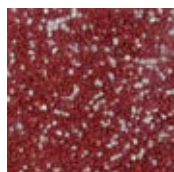
N° 12



N° 13



N° 14



N° 15



N° 16



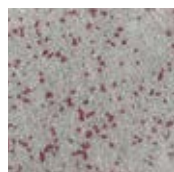
N° 17



N° 18



N° 19



N° 20



N° 21



N° 22



N° 23



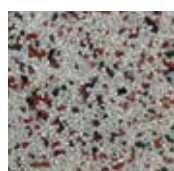
N° 24



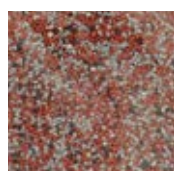
N° 25



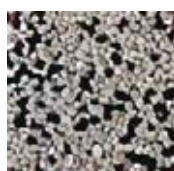
N° 26



N° 27



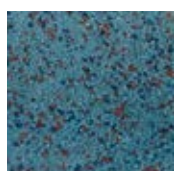
N° 28



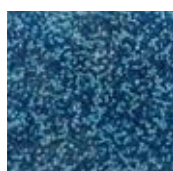
N° 29



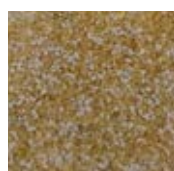
N° 30



N° 31



N° 32



N° 33

PIGMENTS PU

[DATA SHEET](#)

Solvent based pigment pastes for solvent based polyurethane products (Colodur, Rayston floor top 1k).

Format: 0,8 and 4 kg.

Standard colours

RAL 3009	Iron oxide
RAL 9004	Black
RAL 2001	Tile red
RAL 1015	Light ivory
RAL 5010	Gentian blue
RAL 5015	Sky blue
RAL 6001	Emerald green
RAL 6021	Pale green
RAL 7001	Silver grey
RAL 7011	Iron grey
RAL 9003	White
RAL 1001	Beige

Other colors consult: Minimum order 12 * 4kg · Delivery time approx. 2 weeks.

WATER BASED PIGMENT

[DATA SHEET](#)

Water based pigment pastes for polyurethane and epoxy waterbased products.

Format: 0,8 and 4 kg.

Standard colours

RAL 1001	Beige
RAL 1014	Ivory
RAL 6010	Grass green
*RAL 7001	* Silver grey
RAL 7013	Brown grey
RAL 7016	Antracite grey
RAL 7035	Light grey
RAL 7038	Agate grey
RAL 7042	Traffic grey A
RAL 7044	Silk grey
RAL 7047	Telegrey 4
RAL 9003	White

* RAL: Standard colors · Other colors to consult: minimum order 48kg (12 * 4kg) and delivery time.

SPRAY PIGMENTS

[DATA SHEET](#)

Liquid paste for pigmenting the A component of Spray products (Impermax 2K, Impermax Polyurea H, Polyurea, Kryptanate Spray, Rayston Spray D50 and Impermax Polyurea H Flex).

Format: 0,8 and 4 kg.

Standard colours

RAL 1001	Beige
RAL 3009	Iron oxide
RAL 5015	Sky blue
RAL 7001	Silver grey
RAL 7011	Iron grey
RAL 2001 (Aprox.)	Tile red
RAL 6021	Pale green
RAL 9003	White
RAL9004	Black

* RAL: Standard colors · Other colors to consult: minimum order 48kg (12 * 4kg) and delivery time.

DECORATIVE FLAKES

Description:

Made from acrylic resin. The dyes used offer excellent resistance to UV rays. Wide range of colors (around 350) and 6 granulometries (0.1 mm, 1 mm, 2 mm, 3 mm).

Applications:

The chips are used as a decorative finish in self-leveling or multilayer resin systems. They should always be sealed with a final coating of Colodur, Colodur Eco, Kryptanate, etc. Ideal to combine with Kryptanate 100 in fast application decorative flooring.

COLOUR	kg
TRADITIONAL MONOCROMATICS 1 or 3 mm - For other sizes consult the technical office	20
TRADITIONAL MIXES 3 mm - For other sizes consult the technical office	20
BERLINGOT MONOCHROME Range of 55 original chips of two colors (3 mm). One chip can be used alone or mixed in White and black.	20

On requests.

FLAKES SIZES



1mm



3mm

TRADITIONAL FLAKES (Colour examples)



1/153



3/903



3/003



3/053



3/043



3/553



6/003



6/603



6/633



7/063



7/223



7/243



7/263



3/023



4/363



4/153



4/593



4/063



8/033



8/143



5/023



6/023



4/213



4/183

BERLINGOTS FLAKES (Colour examples):



45/053



25/133



15/223



13/213



3/043



46/193



54/423



44/613



67/203



17/173



17/373



48/893



66/153



55/403

RAYSTON RCB-580


[DATA SHEET](#)

One component aromatic polyurethane binder (**slightly yellow**).

DOES NOT CONTAIN PHTHALATES

Allows in situ aggregation of granules in SBR or EPDM recycled rubber. Winter version, accelerated which allows curing at low temperatures.

Suitable for sports facilities, playgrounds, fall arrest floors, etc.

Colour	kg
	25
	210
Consumption:	Consult the technical data sheet. Check delivery time. On request.

RAYSTON RCB-580 S


[DATA SHEET](#)

One component aromatic polyurethane binder (**slightly yellow**).

DOES NOT CONTAIN PHTHALATES

Allows in situ aggregation of granules in SBR or EPDM recycled rubber. Summer version with slower curing at high / medium temperatures. (see Technical Data Sheet).

Suitable for sports facilities, playgrounds, fall arrest floors, etc.

Colour	kg
	25
	210
Consumption:	Consult the technical data sheet. Check delivery time. On request.

RAYSTON RCB-581 A


[DATA SHEET](#)

Aliphatic PU resin, to use in combination with EPDM rubber pellets. Phtalate-free. Colour fast.

Application

Similar to Rubber crumb binder. Can be combined with colored EPDM pellets without causing yellowing or colour pitch changes over time.

Colour	kg
	25
	210
Consumption:	Consult the technical data sheet. Check delivery time. On request.

Multicolour rubber binder.

Playground in
Granada, Spain.



SBR PELLETS

[DATA SHEET](#)

Particule size 1.0 - 7.0 mm. For decorative pavements. It is generally used in the bottom part of the pavement, below the EPDM layer.

Check delivery time. On request.

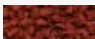





Colour	kg
Black M-8 1,0-4,0 mm	25
Black M-4 2,0-7,0 mm	25

EPDM PELLETS

[DATA SHEET](#)

Particule size 1.0 - 3.5 mm. For decorative flooring and with shock absorbing effect (anti-trauma). Ideal for children's games, sports floors, rooms, gyms, etc.

Check delivery time. On request.

Colour	RAL code	kg
 RED	RAL 3016	25
 GREEN	RAL 6021	25
 BLUE	RAL 5010	25
 YELLOW EGG SHELL	RAL 1002	25
 BEIGE	RAL 1014	25
 SHINING GREEN	RAL 6017	25

RUBBER MATT

[DATA SHEET](#)

They are generally used for the bottom part of the paving, in SPORT systems, subsequently covered with the PAVISOFIT resin.

Check delivery time. On request.



	ml/roll	m²/roll
3 mm	40	60
4 mm	30	45
5 mm	24	36
6 mm	20	30
7 mm	17	25,5
8 mm	15	22,5
9 mm	14	21
10 mm	12	18
12 mm	10	15

RUBBER MATT PLUS

[DATA SHEET](#)

Softer version with extra dampening effects rs standard RUBBER MATT, for sports floors with high demands / anti-trauma requirements.

Check delivery time. On request.

	ml/roll	m²/roll
6 mm	20	30
7 mm	17	25,5
8 mm	15	22,5
9 mm	14	21
10 mm	12	18



POLYUREA TECHNOLOGY

EPOXY TECHNOLOGY

POLYURETHANE TECHNOLOGY

PRODUCT RANGE

Industry & protective coatings

www.kryptonchemical.com



ABRASION AND IMPACT RESISTANCE, AND CHEMICAL RESISTANCE

KRYPTON PROLINE AB95P


[DATA SHEET](#)

Pure Polyurea for industrial applications. ProLine AB95P is formulated using 100% pure polyurea technology to produce an extremely hard wearing seamless protective lining that exhibits excellent abrasion and impact resistance.

Spray applied to any thickness in one application, even in challenging environmental circumstances its instant curing features result in a very rapid return to service for industry.

Excellent elongation and high tensile strength. Maintains physical characteristics through a wide temperature range -40°C-+120°C. Can be easily and quickly repaired. Good chemical resistance. Can incorporate wear indicator zones for planned maintenance.

Application:

- Mining equipment.
- Separator tanks.
- Pipe linings, culvert linings.
- Slurry and processing tanks.
- Bulk material storage and handling.
- Bins, hoppers, chutes.
- Train carriage linings.
- Conveyor belt repairs.
- Trunks linings.

Colour	kg
Grey 7011, Blue	40
Grey 7011, Blue	420

Consumption:	1,8-2kg/m ² for a 1,9 mm thick layer.
Notes:	For other colours: please check with the sales office for order and price.

KRYPTON PROLINE CH55


[DATA SHEET](#)

Pure polyurea membrane formulated to provide excellent chemical and moisture resistance for submersion applications.

The dense but flexible nature of the finished lining is ideal for impact and abrasion resistance. Once cured it forms a continuous and seamless barrier with high impact properties. Very low permeability to Radon, Methane and Carbon Dioxide gases. Very low permeability. High puncture and compression resistance.

Application:

- Lining of tanks containing chemical and / or high solids liquids.
- Lining of secondary containment bunds subject to chemical leaks.
- Low friction coefficient.
- Excellent anti-corrosion protection.
- Pipe linings, culvert linings.
- Pipe coating for below ground applications including in soils with high moisture and chemical content.
- Above ground pipe coating applications subject to sand abrasion.
- Re-instatement of leaking concrete tanks or substrates subject to movement.

CE mark according EN 1504-2 norm for the protection of concrete structures. Certified system C5H according to ISO 12944-6:2018.

Colour	kg
Grey - Beige - Title red	40
Grey - Beige - Title red	420

Consumption:	1,8-2kg/m ² for a 1,9 mm thick layer.
Notes:	For other colours: please check with the sales office for order and price.

KRYPTON PROLINE AB85H



DATA SHEET

Hybrid polyurea for Industrial applications. ProLine AB85H is formulated using hybrid polyurea technology and produces an extremely abrasion resistant and impact resistant seamless protective lining.

Applied to any thickness in one application and curing in minutes it provides a very rapid solution to industrial maintenance projects that require excellent abrasion resistance, impact resistance, permanent corrosion protection of the substrate and a very rapid return to service. Can be easy and quickly repaired. Can incorporate wear indicator zones for planned maintenance.

Aluminum version available upon request.

Application:

- Bins and hoppers.
- Dump truck bodies.
- Ball mill linings.
- Slurry and processing tanks.
- Bulk material storage and handling facilities – grain, fertiliser, sand, gravel, coal, iron ore, gypsum etc.
- Bulk material rail carriages.
- Trunks linings.
- OEM parts subject to abrasion.

Colour	kg
Grey, Beige -Tile	40
Grey, Beige -Tile	420
Consumption:	1,8-2kg/m ² for a 1,9 mm thick layer.
Notes:	For other colours: please check with the sales office for order and price.

APPLICATIONS SPÉCIALES

KRYPTON PROLINE 60 EPS

DATA SHEET

It is a fast-curing modified polyurea resin formulated for application on various substrates, including expanded polystyrene (EPS) foam. It is exclusively applied by mechanical spray on-site. Hard and flexible membrane. Pigmentable.

Membrana dura y flexible.

Applications:

- Protection and enhanced aesthetic appeal for polyurethane foam and phenolic foam.
- Theming projects.

Colour	kg
RAL 7001	40
RAL 7001	420
Consumption:	-
Notes:	For other colours: please check with the sales office for order and price.

KRYPTON PROLINE AB70 A PLUS

DATA SHEET

Low-viscosity polyurea with high mechanical strength, excellent elongation and elasticity, and an aesthetic finish.

Specifically designed for coating foam furniture and 3D-cut foam objects.

Colour	kg
RAL 7001	40
RAL 7001	420
Consumption:	-
Notes:	For other colours: please check with the sales office for order and price.

ABRASION RESISTANCE

KRYPTON PROLINE MFE 100


[DATA SHEET](#)

Anticorrosion primer or intermediate. Two component high solids multifunctional epoxy. Surface tolerant with high adhesion to the substrate and providing high corrosion protection even with poor surface preparation.

Suitable in salt and freshwater immersion and corrosive chemical environments. Suitable with water jetting. Excellent abrasion resistant. For medium, high, ver high corrosivity environment C3, C4 and C5 as in immersion. Excellent for maintenance and repairing. Up to 300 microns per coat.

Corrosion protector of:

- Steel bridge structures.
- Industrial steel structures.
- Bins and hoppers.
- Pipes.
- Rail way carriages.
- Power transmission towers.
- Tanks and steel storage vessels.

Colour	I
White	20
Grey	20

Consumption:	DFT 120 microns, spreading rate: 6,7m ² /l.
Notes:	Volume solids: 88%.

CHEMICAL RESISTANCE

KRYPTON PROLINE NE 500


[DATA SHEET](#)

ProLine NE 500 is a novolac epoxy with 78% volumetric solids, for steel and concrete surfaces.

Application:

- High chemical and mechanical anticorrosive resistance for both steel and concrete in contact with chemical compounds, especially hydrocarbons and in continuous immersion.
- Thermal resistance with dry heat up to 200°C.
- Immersion resistance up to 100°C.

Recommended for inside tanks and pipes (acids, gasoil....).

Recommended system: 2 layers of 150 microns each, with a total system of 300 microns.

Colour	I
White	20

Consumption:	DFT 150 microns, spreading rate 5,2m ² /l.
Notes:	Volume solids: 78%. Excellent product for chemical agresivity.

PRIMERS

KRYPTON PROLINE PU ZN PRIMER


[DATA SHEET](#)

Single pack, moisture-cure, fast drying polyurethane anticorrosion primer filled with zinc and micaceous iron oxide (MIO). Provides cathodic (galvani) and barrier long term protection of steel surface.

Application:

- From -18°C up to 55°C.
 - With no dew point restrictions, at high relative humidity up to 99% With no restriction on the maximum recoating interval.
- As primer for waterproofing system.

For structures in medium, high, very high and extreme atmospheric corrosivity categories (C3,C4,C5 and CX) ISO 12944-2:2018 and immersed.

Included in certified system C5H according to ISO 12944-6:2018.

Colour		I
Grey matt		10
Consumption:	DFT 80 microns, spreading rate: 8,4 m²/l.	
Notes:	Substrate: steel. Volume solids: 67%.	

KRYPTON PROLINE PU AL PRIMER


[DATA SHEET](#)

Excellent anticorrosion one component primer for substrate metals no ferrous galvanized steel. Surface tolerant. Provides high adhesion, anticorrosion and long-lasting barrier properties.

Application:

- From -18°C up to 55°C.
- With no dew point restrictions, at high relative humidity up to 99%.
- With no restriction on the maximum recoating interval.
- As primer for waterproofing system.

For structures in medium, high, very high and extreme atmospheric corrosivity categories (C3,C4,C5 and CX) ISO 12944-2:2018.

Colour		I
Aluminium matt		10
Consumption:	DFT 80 microns, spreading rate: 8,4 m²/l.	
Notes:	Substrate: Metal no ferrous. Volume solids: 67%.	

INTERMEDIATE COAT

KRYPTON PROLINE AC MIO


[DATA SHEET](#)

One component, moisture-cure polyurethane intermediate coating with micaceous iron oxide (MIO). Provides barrier properties and long protection.

Application:

- From -18°C up to 55°C.
- With no dew point restrictions, at high relative humidity up to 99%.
- With no restriction on the maximum recoating interval.

Colour		I
Grey, Beige, Matt		10
Consumption:	DFT 80 microns, spreading rate: 8 m²/l.	
Notes:	Volume solids: 64%.	

KRYPTON PROLINE SILVER TC


[DATA SHEET](#)

Topcoat and primer coating, single pack moisture curing polyurethane coating filled with aluminium pigment. Provides excellent resistance to atmospheric influence and abrasion, to UV and colour stability and improves anticorrosion and barrier properties. It can be applied as single layer coating.

Application:

- From -18°C up to 55°C.
- With no dew point restrictions, at high relative humidity up to 99%.
- With no restriction on the maximum recoating interval.

For structures in medium, high, very high and extreme atmospheric corrosivity categories (C3,C4,C5 and CX) ISO 12944-2:2018.

Colour	I
Aluminium	10
Consumption:	DFT 70 microns, spreading rate: 8,57 m ² /l. DFT 100 microns, spreading rate: 6 m ² /l.
Notes:	Surface: Steel, non-ferrous metals, stainless steel and galvanized surface. Volume solids: 60%. Gloss: semi-gloss.

KRYPTON PROLINE PU 1000TC


[DATA SHEET](#)

Is a one component, aliphatic polyurethane, that cures upon reaction with atmospheric moisture. ProLine PU 1000TC provides a hard yet flexible protective coating with good abrasion, scratch and weather resistance.

ProLine PU 1000TC provides high resistance against common chemical agents and excellent, colour fast UV surface protection for use over aromatic coating and waterproofing systems. Easy to apply one-component product.

Application:

- Colour fast, UV and chemical protection topcoat of steel surface in anticorrosion systems.
- For structures in medium, high, very high atmospheric corrosivity categories (C3,C4 Y C5- ISO 12944-2:2018).
- Protective UV topcoat for cold or hot-applied waterproofing membranes (pigmented version).
- Protection of outdoor wood surfaces.
- General outdoor use.

Colour	I
Pigmented	6
Pigmented	25
Consumption:	Approx. 200-500 gr/m ² DFT 60-80μ.
Notes:	For other colours: please check with the sales office for order and price.

KRYPTON PROLINE THINNER

[DATA SHEET](#)

100% solvent compatible with Krypton anticorrosive PU 1K products: Krypton ProLine PU ZN Primer, Krypton ProLine PU AL Primer, Krypton ProLine AC MIO, and Krypton ProLine Silver TC.

Colour	I
-	5
-	10
Consumption:	-
Notes:	-



SUPPORT PREPARATION

PRIMERS

ADDITIVES, CATALYSTS
AND SOLVENTS

JOINT TREATMENTS

GEOTEXTILES

PRODUCTS AND ACCESORIES

Complementary

www.kryptonchemical.com



CARRIER AND PREPARATION OF AWKWARD SUBSTRATES

RAYSTON VEL

[STRAT INSULATION / WATERPROOFING SYSTEM]

[DATA SHEET](#)

Rayston Vel is a fiberglass base felt covered with solid oxidized asphalt, finished with fine sand on both sides. Its unique formulation prevents it from staining or contaminating the PU membranes above.

Application

Designed to be used on top of insulation boards, bonded with PU 2K adhesive.

It is meant to be used as a carrier on roofs for the Impermax Strat System creating a separation layer below Impermax liquid membranes. It also facilitates application into old roofs with asphalt, hot melt bitumen or similar situations.

Length (m)	ml/roll
1	20

Notes:	Palet of 28 rolls. Check delivery time. On request.
--------	--

RAYSTON VEL PLUS

[DATA SHEET](#)

Self-adhesive multilayer membrane, watertight, that behaves as a total barrier against water vapour and other gases.

It consists on a self-adhesive low-thickness bituminous compound, self-protected by a reinforced aluminium foil and a fibreglass net.

Used as a carrier membrane in the Impermax Strat System and as a support for semi-adhered systems, where the preparation of the support prior to the application of a liquid membrane is considered difficult.

Length (m)	ml/roll
1,08	40

Notes:	Palet of 25 rolls. Thickness 0,6 mm. Check delivery time. On request.
--------	--

REPAIR AND PREPARATION MORTAR OF NEGATIVE WET OR PRESSURE SUPPORTS

TECNOCEM



[DATA SHEET](#)

Three component epoxy cement (two component epoxy + cement), used as vapor barrier.

On moist surfaces and walls for a better adherence of synthetic resins for flooring or waterproofing. Surface repair before the application of self-leveling products.

The unique composition of Tecno cem provides a moisture barrier on substrates where there is the risk of water/ humidity which may cause negative pressure build-up over time, and blisters. Apply at min 2KG/m².

Requires good ventilation when used below ground, or in closed areas.

Colour	kg
Smoked white	37,50

Consumption:	Consult the technical data sheet
--------------	----------------------------------

Certification:	LABORATORY TEST AND CERTIFICATION: DETERMINATION OF RESISTANCE TO REVERSE HYDROSTATIC PRESSURE - UNI 8298 Part 8 Laboratory test duration: 72 hours - Pressure: 1,000 kPa (10 BAR) - Alteration: no .
----------------	---

SPRAY PRIMERS

RAYSTON SPRAY PRIMER 150



[DATA SHEET](#)

High density spray foam. The high density and hardness of the product, its foaming uniformity and smooth finish, coupled with its high grip, make it an ideal primer for applying into irregular substrates (cement, concrete decks, etc.).

Application

Allows the further application of hot spray membranes (Impermax 2K, Polyurea Rayston) with a minimum waiting time.

Note: Don't leave the product exposed for longer than one hour before coating with PU/PUA membranes.

Colour	kg
	50
	470

Consumption:	Around 1,2/1,5 kg/m ² per 1 cm thick.
--------------	--

Notes:	Do not leave the foam exposed for more than 1 hour before applying the polyurea.
--------	--

ADHESIVES

ADHESIVE PU 1K


[DATA SHEET](#)

Single component flexible polyurethane adhesive for construction applications.

Highly resistant and fast curing.

- Insulation fixing
- Laying of synthetic flooring

Colour	kg
Light yellow	5
Light yellow	25
Consumption:	Aprox. 300 to 500 gr/m ²

ADHESIVE PU 2K


[DATA SHEET](#)

Two component hard polyurethane adhesive for construction applications. Highly resistant and fast curing.

- Bonding of different construction elements
- Insulation fixing
- Laying of synthetic flooring

Ideal for fixing/laying RAYSTON VEL

Colour	kg
Light yellow	5
Light yellow	25
Consumption:	Aprox. 300 to 500 gr/m ²

RAYSTON INSULATION ADHESIVE


[DATA SHEET](#)

Solvent free, foaming moisture-cured single component polyurethane adhesive.

Application

Bonding insulation boards to a wide variety of decks and vapor control layers on roofs.

Colour	kg
Dark Brown	6,5
Consumption:	300 a 500 g/m ²

POLYURETHANE ISOLATING FOAMS

RAYSTON SPRAY FOAM 8W / 30W / 40W / 50W


[DATA SHEET](#)

Bi-component polyurethane foam system, with very low environmental impact (water as a foaming agent) applied with a projection machine (density 8, 30, 40 or 50 kg/m³).

Application

Thermal and acoustic insulation. Additionally, **Rayston Spray Foam 50W** can be used as an adherence layer and support regulator for hot-applied polyurea membranes in roof waterproofing works.

Colour	kg
Yellow	480

RAYSTON SPRAY FOAM HFO 35 / 40 / 50


[DATA SHEET](#)

Two-component polyurethane foam system with low environmental impact (HFO gas as foaming agent). Applied with projection machine (Density 35, 40 or 50 kg/m³)

Application

Thermal and acoustic insulation. Additionally, **Rayston Spray Foam HFO 50** can be used as an adherence layer and support regulator for hot-applied polyurea membranes in roof waterproofing works.

Colour	kg
Yellow	480

POLYURETHANE PRIMERS

POROSITY SEALER


[DATA SHEET](#)

Single component aromatic polyurethane resin solvent based. Sealing, priming and consolidating concrete.

Excellent as a porosity sealer on complete dry concrete, cement, mortar, etc. prior to application of flooring, waterproofing, laminated polyester / fiberglass, etc.

Application

Can be applied by brush, roller or airless, used also as a particulate binder in anti-skid coatings (Rough anti-slip additive, see page 50) in floors of warehouses, manufacturing facilities and car parks.

Colour	kg
	4
	20

Consumption: 100 a 300 g/m² per hand

POROSITY SEALER FLEX


[DATA SHEET](#)

Primer for dry flexible surfaces for a further application of water proofing systems with polyurethane resins or polyurea.

This resin cures in contact with air moisture, creating a flexible coating.

Application

Excellent primer for surfaces subject to movement (existing between felt, epdm, pvc, etc) that need to be renewed with PU systems.

Colour	kg
	4
	20

Consumption: 100 a 300 g/m² per hand

POROSITY SEALER FLEX 100


[DATA SHEET](#)

Primer based on a single-component polyurethane resin, very high solids content, non-flammable and low odor. Once cured it forms a continuous, highly elastic coating. Specially designed for bituminous and/or flexible completely dry supports before a subsequent application of waterproofing systems in polyurethane or polyurea elastomeric resins.

Colour	kg
	20

Consumption: 100 a 300 g/m² per hand

RAYSTON PRIM PU 100


[DATA SHEET](#)

Solvent free, 100% solid, single component polyurethane primer

Application

Rayston Prim PU 100 is meant to be applied as primer under Pavistone 1K System or into concrete substrates that require sealing/ consolidation.

Colour	kg
	4
	20

Consumption: 100 a 400 g/m² per hand

PRIMER PU 2K


[DATA SHEET](#)

Two-component, solvent-free polyurethane primer.

Application

Primer for polyureas and polyurethanes applied on dry, rigid, and porous substrates. Suitable for waterproofing works with low stress requirements or when the membrane is not exposed.

Colour	kg
	20

PRIMER PU 2K BIO


[DATA SHEET](#)

Two component, solvent free bio based polyurethane primer

Application

Primer for biobased membranes. Specially designed to seal dry, highly porous and not cohesive supports (lightened mortars, for example).

Colour	kg
Light yellow	18
Consumption:	300 a 600 g/m ² per hand

ADHESION PROMOTERS

PU PRIMER


[DATA SHEET](#)

This primer provides a better adhesion on difficult/non porous smooth dry surfaces. It doesn't form a film.

Application

Promotes the adhesion of polyurethane coatings and membranes. It can be applied by roller, brush or spray, but it is best when brushed.

Do not apply on dirty, damp or wet supports, or supports stained with

Colour	kg
Colorless	4
Colorless	20
Consumption:	50 - 100 g/m ²

EPOXY PRIMERS

HUMIDITY PRIMER


[DATA SHEET](#)

Two-component, water-based epoxy formulation.

Perfect for priming wet porous substrates that will be coated with epoxy or polyurethane systems.

High chemical resistance, and pigmentable in situ. It works as an excellent anti-dust coating on cement flooring or wall treatment. Allows adhesion between the concrete pieces. Can be applied by roller, brush or airless spray.

Colour	kg
Colorless	5
Colorless	18
Consumption:	Between 200 and 300 g/m ² of unthinned product

HUMIDITY PRIMER LV


[DATA SHEET](#)

Two-component, water-based, low-viscosity epoxy formulation. High chemical resistance, pigmentable in situ. It works as an excellent anti-dust coating on cement flooring or wall treatment. Allows adhesion between the concrete pieces. Can be applied by roller, brush or airless spray.

Colour	kg
Colorless	18
Consumption:	-

PRIMER GC


[DATA SHEET](#)

Two-component epoxy resin, solvent free, and quick curing. May be applied in a single thick layer (horizontal surface). It shows a very good adhesion on porous supports (concrete or mortar) that have a high humidity, although without standing water on the surface. It is compatible with wet substrates and cures faster than Humidity Primer

Application:

Primer applied (trowel or roller) over wet substrates (however without negative pressure) for floor coatings and water-proofing membranes (either hot spray applied or cold applied). Does not provide a vapor barrier. Ideal in podium decks, basements and other applications that require a weather proof system, and where membranes will be subsequently covered and not exposed to blistering.

Colour	kg
Dark grey	15
Consumption:	From 500 - 600 grams per hand for 300-350 micron
Notes:	Although the resin is compatible with wet substrates, once cured it does not provide a vapor barrier and is not resistant to negative pressure.

PRIMER GC THIXO


[DATA SHEET](#)

Two-component epoxy resin, solvent free, low viscosity and quick curing. May be applied in a single thick layer (horizontal surface). It has a very good adhesion on porous supports (concrete or mortar) that have a high humidity, although without standing water on the surface.

Colour	kg
-	15
Consumption:	From 500 - 600 grams per hand for 435-525 micron.
Notes:	Although the resin is compatible with wet substrates, once cured it does not provide a vapor barrier and is not resistant to negative pressure.

PRIMER EPOXY 100


[DATA SHEET](#)

Two component, universal epoxy primer (completely dry surfaces). Low viscosity and high performance. Solvent-free.

Applications

- Universal primer for Polyurea and most flooring applications
- For anchoring and sealing concrete surfaces with sand.
- For elaborating dry mortar in combination with sand (proportion 8:1)
- As pre-levelling layer (with sand)
- As union between new and old mortar.

Colour	kg
	15
Consumption:	Between 200 and 500 g/m ² of unthinned product

PRIMER EPOXY PLUS


[DATA SHEET](#)

Two component, universal epoxy primer (completely dry surfaces), for waterproofing and flooring solutions. High performance. Solvent-free.

Applications

- For elaborating dry mortar in combination with sand (proportion 8:1)
- As a levelling layer (with sand).

On slightly porous surfaces, it is recommended to dilute with Rayston solvent by 5-10% for better penetration of the resin into the surface.

Colour	kg
	15
Consumption:	Between 200 and 500 g/m ² of unthinned product

PRIMER EPOXY PLUS 2


[DATA SHEET](#)

Primer epoxy 100% solids, with mineral fillers, specially designed for use on concrete, mortar or ceramic surfaces, thus ensuring good adhesion with Rayston waterproofing and flooring systems.

On slightly porous surfaces, it is recommended to dilute with Rayston solvent by 5-10% for better penetration of the resin into the surface. Suitable for use as a leveling layer with the incorporation of natural aggregates in a 1:0.5 ratio.

Colour	kg
Colorless	24,5
Consumption:	Between 200 and 500 g/m ² of unthinned product

RAYSTON EPOXY 100 GEL


[DATA SHEET](#)

Rayston Epoxy 100 Gel is a transparent two component sealer based on a solvent-free epoxy resin. The product is specially designed to seal dry porous or irregular vertical surfaces. Rayston Epoxy 100 Gel is easy to work with, has excellent sealing properties, fast curing, good mechanical properties and excellent chemical resistance.

It allows a quick preparation and sealing of the support even in very irregular vertical surfaces.

Colour	kg
Transparent	10
Consumption:	Aprox between 200 and 600 g/m ²

COLD APPLIED POLYUREA PRIMERS

POLYUREA PRIMER

[DATA SHEET](#)

Fast curing, cold applied Polyurea primer. Solvent based.

Application

As adhesion layer, sealant and strengthener for hard, porous and dry substrates. Sealant of porous substrates (concrete, cement) before the application of polyurethane or polyurea waterproofing membranes.

Colour	kg
Colorless	4,4
Colorless	22
Consumption:	300 - 400 g/m ² .

POLYUREA PRIMER FLEX

[DATA SHEET](#)

Fast curing, flexible, cold applied polyurea primer. Solvent based.

Application

As adhesion layer of flexible and dry substrates (PVC, EPDM, asphalt felts, except polyolefins) which must be renewed with membranes applied in liquid form, especially hot-applied ones.

Colour	kg
Colorless	4,4
Colorless	22
Consumption:	200 - 400 g/m ² .

SPECIAL PRIMERS

RAYSTON TPO PRIMER

[DATA SHEET](#)

Special film-forming primer for elastomeric waterproofing coatings (polyurethanes and polyureas) applied over existing prefabricated TPO/ FPO waterproofing membranes on roofs. Not recommended for use on other types of polyolefin substrates or on prefabricated PVC or EPDM waterproofing membranes.

Colour	kg
Colorless	4
Colorless	20
Consumption:	Approximately between 100 and 150 grams/m ² .

RAYSTON PU SOLVENT

[DATA SHEET](#)

Solvent 100% compatible with RAYSTON products. Suitable for IMPERMAX, IMPERTRANS and COLODUR products, EPOXY 100, etc.

Colour	kg
Colorless	4
Colorless	20

SLOW SOLVENT PU

[DATA SHEET](#)

100% retardant solvent compatible with Rayston products. Suitable for IMPERMAX, IMPERTRANS, COLODUR. Specific to prolong the catalytic periods of RAYSTON products under specific climatic conditions, avoiding the rapid and inappropriate formation of a skin on the surface of the product.

Colour	kg
Colorless	4
Colorless	20

PUR CAT ADDITIVE

[DATA SHEET](#)

Accelerates the curing of IMPERMAX and one-component Pu products. Dose of 1kg for every 25kg of IMPERMAX.

It helps to dilute the product before its application.

kg
1

SUPERACCELERATOR PU

[DATA SHEET](#)

It considerably accelerates the curing of IMPERMAX. 1.5 kg is required per a 25 kg IMPERMAX.

NOTE: with light colors (eg Grey) it causes a rapid yellowing of the product without altering its characteristics. Allows application of 2 kg/m² in one pass, and "wet on wet" cycles.

kg
1,5

ACCELERATOR FOR PU 2K

[DATA SHEET](#)

Solvent free catalyst to combine with a 21 kg KIT of IMPERMAX 2K M. It helps to obtain a faster drying in situations of low temperatures.

kg
0,150

EPOXY ACCELERATOR

[DATA SHEET](#)

It accelerates the catalysis process of PRIMER H, Epoxy 100 in conditions of low temperatures and high humidity in the environment.

NOTE: In areas of high humidity indoors, it is important to ensure good ventilation to facilitate the evaporation of water.

kg
1

THIXOTROPY ADDITIVE (LIQUID)

[DATA SHEET](#)

Especially indicated for the application of IMPERMAX on vertical surfaces or with a steep slope. 1kg of dose per 25kg of IMPERMAX. It is convenient to allow the additive to act at least 5-10 minutes after its addition and mixing with IMPERMAX.

kg
1

THICKENING ADDITIVE (POWDER)

[DATA SHEET](#)

Especially suitable for the application of PAVISOFIT, PAVIFLOOR and IMPERMAX AQUA 2K on vertical or steep slopes.

Dosage of 0.500 / 1 kg per 25 kg of product. Perform preliminary tests.

For TECNOCEM 1-2% in weight according to the use.

kg

10

MATTING ADDITIVE

[DATA SHEET](#)

Allows reducing the surface characteristic gloss of polyurethanes, without affecting their mechanical properties.

Application

Pre dosed for combining with 20 kg of clear polyurethane like Colodur or Impertrans.

Assure correct mixing before application.

kg

4

ANTISLIP ADDITIVE (FINE)

[DATA SHEET](#)

Anti-slip additive for finishing products such as COLODUR, IMPERTRANS, KRYPTANATE M.

For its application, consult the technical office.

kg

1

ANTISLIP ADDITIVE (COARSE)

[DATA SHEET](#)

Stop the slippage Excellent dispersion and finishing. A homogenous and aesthetically consistent, rough mixture is obtained that complies with the most demanding regulations.

Approx. 700 microns. Possibility of direct mixing with IMPERTRANS / COLODUR / KRYPTANATE. And other finishing products.

kg

1

PAINT STRIPPER K

[DATA SHEET](#)

Concentrated gel stripper for cleaning paint residues, waterproofing, foams, etc. Great softening power It is applied with a brush or roller, on the surface to be treated.

kg

4

RAYSTON FLUID

[DATA SHEET](#)

Mixing of oils and plasticizers for the cleaning and maintenance of hoses in the spray equipment. Prevents the formation of isocyanate residues.

kg

25

MASTICS AND SEALANTS

RAYSTON FLEX 3040

[DATA SHEET](#)

Polyurethane sealant MEDIUM modulus. Adheres to aluminum, glass, masonry, wood, etc.

Colour	ml
Sausage Grey	600

Note: In all cases check availability and minimum order
 · Standard colour: Grey · Sold per box · Cartridge:
 20 units per box / 50 units per pallet



GUN FOR RAYSTON FLEX 3040

Professional manual gun. Compatible with 310 and 600ml sausages.

Application

Extrusion of the 600 ml sausages of Rayston Flex 3040.

Colour	Unit
	1

Note: Check delivery time. On request.



SELF-ADHESIVE BUTYL / POLYESTER TAPE

BUTYL TEX

[DATA SHEET](#)

Adhesive strip made of a butyl viscoelastic layer coated by a non-woven, which allows a limited transverse deformation and longitudinal deformations.

The adhesive side protected by a peelable protective paper, easy to remove.

Application

Allows the subsequent application of waterproofing products: Impermax, self leveling Pavifloor / Pavisoft. Sealing drains/gutter.

Width (cm)	ml/Roll	roll/box
7,5	20	8
15	20	4



TPE TAPES

RAYSTON FLEX JOINT

[DATA SHEET](#)

Non-woven polypropylene tape for perfect bonding to all kinds of adhesives and liquid sealing. Thermoplastic elastomere coated, resistant to ageing.

Application

For outdoor applications under cover treatment abroad expansions joints and other types of joints with significant and/or frequent movements.



Width (cm)	ml/Roll	roll/box
12 cm	50	1

RAYSTON FLEX JOINT GEO

[DATA SHEET](#)

Version with geotextile on the entire surface.

Application

For outdoor applications under cover treatment abroad expansions joints and other types of joints with significant and/or frequent movements.



Width	ml/Roll	roll/box
14 cm	30	1

RAYSTON TAPE

Self adhesive plastic tape. It is used in upstands expansion joints, and other situations with Hot Spray and Cold applied systems.

Width	ml/Roll	roll/box
10 cm	50	12



NON WOVEN FLEECE

GEOMAX (80 GR/M²)

[DATA SHEET](#)

Geotextile fabric made of synthetic polyester/polyamide fibres. Designed as a supplementary reinforcement of Impermax membranes.

Application

Reinforced application of liquid membranes in details and critical points. Check Krypton Chemical's Waterproofing Manual for more information.

Roll	ml/Roll	M ² /Roll
0,30	100	30
1,00	100	100

FIBERGLASS

RAYSTON FIBER

[DATA SHEET](#)

Matt made of glass filaments randomly distributed to form a regular mattress.

Ideal to combine with Impermax and Impermax Cold Polyurea systems. Provides continuity and thickness consistency by embedding into the first layer of resin.

	Height (cm)	ml/Roll	M ² /Roll
30 g/m ²	1	50	50
150 g/m ² (UE)	1	40	40

RAYSTON FIBER NET

[DATA SHEET](#)

Fiberglass mesh white colored high efficiency antialcalina protection. Used to apply Epoxy/ Pu Flooring onto awkward substrates or tiles.

	Height (cm)	ml/Roll	M ² /Roll
165 g/m ²	1	50	50

PLUGS FOR RAYSTON FIBER NET

Polypropylene plug with a with fiberglass reinforced plastic nail for fixing Rayston Fiber Net. Easy to assemble.

Drill (mm)	Min. Perforation (mm)	Plug Length (mm)	Nail length (mm)	Ud/box
8	40	77	70	100

SPECIAL NMDC NON WOVEN FOR HOT SPRAY SYSTEMS

GEOMAX SPRAY NMDC

[DATA SHEET](#)

White. 200g/m². High mechanical strength

Application:

Designed for applications of Polyurea Rayston, forming a composite waterproofing material.

Special non-woven material, with NMDC treatment, that allows hot spray applications onto any existing substrate.

Non contractual photo

	Colour	Width (m)	Length (m)	M ² /Roll
200 g/m ²	White	1,50	70	105
350 g/m ²	Black	1,60	70	112

Notes: Without adhesive



MANUAL MACHINERY

POLYUREA JOINT FILLER

SPRAY EQUIPMENT

TOOLS

INDIVIDUAL PROTECTION
EQUIPMENT

Roof waterproofing in Italy with Rayston Spray Robot.

SPECIFIC PRODUCTS FOR

Machinery

www.kryptonchemical.com



RAYSTON SPRAY GUN

Mixer spray gun: indispensable instrument for professional applications, in auto body repairs, scenography, advertising, to be performed with, polyurea. Waterproofing and repairs of roofs, and for sealing and filling outdoor and indoor joints. Check stock and availability.

Features:

- Lock air connection.
- Integrated air flow.
- Less worker fatigue.
- Easier to control.
- Better accessibility to the coating surface area.
- One hand operation of the system.



CARTRIDGES

Features:

- Valve piston.
- Proven leak tightness.
- Precise metering.
- Minimized exposure to chemicals and odors.
- Fast and reliable filling, air-free filling.
- Optimal mixing efficiency.
- Minimum pressure loss.
- Minimizes cross contamination.



PISTON INSERTION TOOL

Piston to close the cartridges.
Order in the first order with the cartridges.



STATIC MIXING POURING TIPS, SEALS 1:1



MIXING SPRAY TIPS, ANTI-RETURN

- Mixing Spray Tip HighFlow (HF) for polyurea, hybrid polyurea and polyurethane systems.
- Mixing Spray Tip MediumFlow (MF).

The air connection is available with a quick-lock connection which allows the cartridges to be easily and comfortably exchanged.

- Unique low pressure spray technology.
- Consistent spray pattern.
- Minimal over spray, minimal waste.
- Proven, consistent mixing results.
- Process reliability.



EXTENSION TUBE 1.50M



AIR TUBE EXTENSION 1500MM



PNEUMATIC MIXER RAYSTON SPRAY GUN CARTRIDGES



POLYUREA JOINT FILLER

POLYUREA JOINT FILLER, SET 40 KG (A+B+ 0,5 KG PIGMENT) TO PACK IN SPRAY GUN CARTRIDGES



Rayston FLEX 90 offers an elasticity greater than 180%. Ideal product for filling and sealing joints in indoor pavements.

[DATA SHEET](#)

Rayston FLEX 70 offers an elasticity greater than 600%. Ideal product for filling and sealing of joints in outdoor waterproofing.

[DATA SHEET](#)

FILLED CARTRIDGES SPRAY GUN



Product

Rayston FLEX 90, 1:1

Notes: 6 cartridges per box.
1,8 kg per cartridge.

Product

Rayston FLEX 70, 1:1

Notes: 6 cartridges per box.
1,8 kg per cartridge.

SPRAYABLE POLYUREAS WITH RAYSTON SPRAY GUN KIT 40 KG (A+B+ 0,5 KG PIGMENT)

Rayston Spray 5090A. Slow polyurea, ideal to apply with the Rayston Spray Gun system.

[DATA SHEET](#)

Rayston Spray 5070A. Hybrid slow polyurea of great elasticity to apply with the Rayston Spray Gun system.

[DATA SHEET](#)

Product

Rayston Spray 5090A

Medium hardness polyurea coating.

Product

Rayston Spray 5070A

Soft/high elongation polyurea coating.

RAYSTON G-1 - SPRAY AND JOINT MACHINE

The Rayston G-1 for applications is portable, compact and easy to use. With simple controls and the ability to pump directly from five gallon (20 kg) containers, the Rayston G-1 can help you reduce labor time and labor costs.



FILLING / POLYUREA POURING KIT

Includes:

Rayston G-1 unit
Non heated hose (10 m)
Heating belts with thermostat (2)
Tool for joint filling / polyurea pouring
10 plastic static mixers (32 cm)
10 L Rayston Fluid

Extras / Consumables:

Plastic Static mixers (32 cm). Box of 25 units.

SPRAY AND JOINT FILLING / POURING KIT

Includes:

Rayston G-1 unit
Special G-1 Spray and Pouring gun
Heated hose (15 m)
Heating belts with thermostat (2)
Gun / mixer cleaning unit
10 L Rayston Fluid

Extras / Consumables:

Heating belt with thermostat (unit)
Plastic static mixers 32 cm (box of 25 units)

RAYSTON G1000

This unique unit combines ease of use and portability features together with reliability and power. Constant pressures and perfect mix in a small portable unit.

Technical specifications: recirculation	
Maximum Output	4 Kg/min 9 lb/min
Maximum Pressure	175 bar (17.2 Mpa) 2489 psi
Electrical line	2 fases de 230 V / 1 fase de 400 V + neutro
Power line 1	1,8 kW (motor)
Power line 2	3,6 kW (heaters)
Consumption line 1	12 A
Consumption line 2	16 A
Standard hose length	20 m
Weight	178 Kg (without hydraulic oil) 363 lb
Dimensions	1128 mm x 605 mm x 819 mm
Technical specifications: heated hoses 230v	
Power line 1	3,3 kW (1,8 kW motor + 1,5 kW hoses)
Power line 2	3,6 kW (heaters)
Consumption line 1	16 A
Consumption line 2	16 A
Max. Heated hose	15 m (heaters)
Technical specifications: hose heating with transformer	
Power line 1	1,8 kW (motor)
Power line 2	3,6 kW (heaters)
Power line 3	2 kW (hoses transformer)
Consumption line 1	12 A
Consumption line 2	16 A
Consumption line 3	10 A
Max. Heated hose	48 m (transformer heating)



RAYSTON G3500 / G3500 PLUS

La nueva unidad de dosificación hidráulica G3500 ha sido diseñada y fabricada para cumplir con los requisitos más exigentes de las aplicaciones de poliurea y espuma de poliuretano y revestimientos en sistemas de dos componentes que requieren alta precisión de dosificación para garantizar la mejor calidad de mezcla de los componentes químicos. Su diseño abierto permite un fácil acceso a todos sus componentes simplificando las funciones de control y reduce significativamente el tiempo de mantenimiento.

Technical specifications	
Max. Output (with pumps 1.1)	15 Kg/min 27 lb/min
Max. Output (with pumps 0.8)	9 Kg/min 18 lb/min
Max. Pressure (with pumps 1.2)	140 bar (13.7 Mpa) 2000 psi
Max. Pressure (with pumps 0.8)	240 bar (23.5 Mpa) 3500 psi
Heating power	12 Kw
Hoses heating power	3 Kw
Electrical connection	38 A @ 3 x 400 V
Weight	250 Kg (without hydraulic oil) 598 lb
Dimensions	1200 mm x 945 mm x 745 mm



G3500
Control panel



G3500 PLUS
Touch screen



RAYSTON G5000 / G5000 PLUS

The new G5000 machine allows working at very high flow rates (20 Kg/ min), at high pressures (140 Bar), allowing high productivity on construction sites. Its open design allows easy access to all its components simplifying the control functions and significantly reduces maintenance time.

Technical specifications	
Maximum output	26 Kg/min @ 110 bar pressure 20 Kg/min @ 140 bar pressure 12 Kg/min @ 240 bar pressure
Heating power	18 Kw
Hose heating power	4 Kw
Electrical connection	56 A @ 3 x 400 V 50/60Hz
Weight	280 Kg (without hydraulic oil)
Dimensions	1200 mm x 900 mm x 700 mm



G5000
Control panel



G5000 PLUS
Touch screen



RAYSTON SPRAY RV

The new unit hydraulically driven, VARIABLE RATIO (VR), has been designed and manufactured for the application of polyurea, polyurethane foam and other two component system requiring precise control over temperature, pressure and mixing ratio

Technical specifications		
Maximum output	15 Kg/min	33 lb/min
Minimum output (Other options available)	1 Kg/min	2,2 lb/min
Maximum rated pressure	270 bar (29.4 Mpa)	4300 psi
Heating power	15 (18) Kw	
Hose heating power	8 Kw	
Electrical connection	66-70 amps 3x 400V 50/60Hz	
	115-122 amps 3x 230V 50/60Hz	
Weight	450 Kg (without oil)	1100 lb
Dimensions	1250 mm x 1110 mm x 1200 mm (50in x 45in x 48in)	



RAYSTON SPRAY ROBOT

Rayston Spray Robot system has been designed to be used with all standard hot spray units, low pressure equipment, and airless machines. It is easy and simple to use.

Rayston Spray Robot advantages

- Accurate material application (control thickness)
- A uniform spray pattern.
- Reduced spray mist through gun design and less contamination from spray mist through electrostatic system.
- Highly manoeuvrable because of its lightweight aluminium design, with few moving parts to keep any spares required to a minimum.
- The rail size is 3,25 mt (128 inches) allowing 3.10 mt (122 inches) effective max spray pattern.
- The robot can be adjusted for longitudinal speed between 0 and 8 km/h (machine direction), as well as having continuous gun speed adjustment on the boom (cross direction).
- The distance from ground can also be adjusted from 0,6 to 1,2m and the gun angle varied.
- The area of application does not have to be perfectly flat either with the robot able to cope with a 10% sloping substrate
- Dimensions: 200 x 90 x 76 cm.
- Weight: 280 Kg.



RAYSTON AIRLESS

This new airless unit has been manufactured to fulfil the requirements of industrial painting when you need to spray professional coatings in demanding applications. This hydraulic unit can be equipped with a petrol engine or electric motor to drive the piston pump. These can be easily interchanged according to our smart concept design. The application with a Airless technology allows high pressure spraying through atomization of air-free paint without mixing the components. Rayston Airless is a perfect solution for the application of top coats and primers.

Technical specifications		
	Petrol GA-200G	Electric GA-200E
Max. Output	6,4 l/min.	5,7 l/min
Max. pressure	228 bar	228 bar
Máx. Filter size	1 gun-0.043" 2 guns-0.033"	1 gun-0.036" 2 guns-0.026"
Engine	Gasoline 5,5 HP	3 HP (220v-50 _Hz)
Weight	72 kg	66 kg
Dimensions	84 cm x 120cm x 108cm	84cm x 120cm x 108cm



RAYSTON G-MAX / G-MAX+

RAYSTON G-MAX is an extremely powerful and versatile digital unit, offering full connectivity plus the power and reliability of hydraulic technology, all in one device to analyse polyurethane foam and polyurea applications.

Features:

- Access to all application data and report generation from any device.
- GPS locator.
- Smart, intuitive touchscreen.
- Remote control from any mobile device.
- Comprehensive control of application parameters:
 - Dosage and mix ratio control with flow meters.
 - Monitoring of inlet and outlet temperatures and pressures.
 - Oil temperature control.
 - Troubleshooting guide and alarms.

Additional benefits:

- Hydraulic power to ensure consistent mixing ratio and pressure levels.
- Dual 6,000 W heaters for efficient heating capacity



Technical specifications G-Max	
Maximum output 1,20 pumps:	15 Kg/min @ 110 bar 17 Kg/min @ 160 bar 7 Kg/min @ 110 bar
Power consumption:	3 PE 400 V 50/60 Hz 3 PE 230 V 50 Hz
Heater power:	12 Kw
Hose heating power:	4 Kw
Motor power:	4 Kw
Machine consumption:	38,4 A / 66,8 A
Max. Long length	93 m
Weight:	242 Kg (without oil)
Oil capacity:	28 l
Dimensions:	1295 mm x 745 mm x 650 mm

Technical specifications G-Max+	
Maximum output 1,20 pumps:	22 Kg/min @ 110 bar 17 Kg/min @ 160 bar 12 Kg/min @ 110 bar
Power consumption:	3 PE 400 V 50/60 Hz 3 PE 230 V 50 Hz
Heater power:	16 Kw
Hose heating power:	4 Kw
Motor power:	5,5 Kw
Machine consumption:	51,1 A / 89 A
Max. Long length	93 m
Weight:	260 Kg (without oil)
Oil capacity:	28 l
Dimensions:	1295 mm x 745 mm x 650 mm

RAYSTON M - MECHANICAL PURGE SPRAY GUN

The Rayston M mechanical self-cleaning spray gun has been designed to offer the best mixing quality of the market when it comes to the application of polyurethane foam, elastomeric coatings and polyurea. Its unique high and low output configurations offer the possibility to work with a wide range of flows with only one gun. The Rayston M gun is light, perfectly balanced, and easy to maintain.

Features:

- High-pressure internal mixture
- Mechanical automatic cleaning
- No solvents required
- Airless spraying
- Automatic greasing of the mixing chamber

Technical specifications

Max. Output ratio 1:1	18 kg/min
Min. Output ratio 1:1	0.5 kg/min
Max. Working pressure	270 bar
Required air pressure	7 bar
Max. Working temperature	90 °C
Weight	1.4 kg
Dimensions	20 cm x 10 cm x 21 cm



RAYSTON BLACK GUN - AIR PURGE GUN

The Rayston Black Gun introduces a breakthrough in technology with the one push patent pending system that allows you to remove the mixing chamber independently – without the need to extract the gun block like in other traditionally designed guns. The Rayston Black Gun also offers the new twist & pull lock system to enable a fast and easy gun block disassembly.

This revolutionary gun has been developed to be light, easy to handle, intuitive and with the fastest maintenance system on the market.

Technical specifications

Max. Output ratio 1:1	18 kg/min
Min. Output ratio 1:1	1,5 kg/min
Max. Working pressure	240 bar
Required air pressure	6-8 bar
Weight	1,25 kg
Dimensions	21,4 cm x 10,8 cm x 16,5 cm



RAYSTON A - AIR PURGE GUN

Rayston A air purge gun has been developed for customers who require an alternative concept design to other air purge guns maintaining the concept of easy handling and maintenance.

Features:

- Internal mixing high pressure
- Automatic cleaning by compressed air
- No solvents required
- Mechanical atomization
- Outdoor oil of the mixing chamber.

Technical specifications

Max. Output ratio 1:1	18 kg/min
Min. Output ratio 1:1	1.5 kg/min
Max. Working pressure	246 bar
Required air pressure	6-8 bar
Weight	1 kg
Dimensions	19 cm x 9 cm x 19 cm



HEATED HOSES (15 M AND 3M LENGTHS)

Rayston hoses incorporate an innovative heating concept based on a copper resistance that is distributed evenly around the hose. It allows a precise and uniform temperature control during products application, avoiding heat concentrations spots that take place in traditional hoses.



TRANSFER PUMP KIT

Rayston stainless steel pumps offer a double-acting pneumatic piston in charge of moving products from drums or IBCs to the spray unit with a maximum viscosity of n2,000 m Pas.

The KIT contains:

- 2 transfer pumps
- 2 transfer hoses



RECIRCULATION KIT

Heater-to tank recirculation kit with ISO only driers. Compatible for all pneumatic and hydraulic machines.

PIPE SPRAY HEAD

Technical specifications	
Special feature	Custom head for polyurea spraying inside pipes
Adjustable height	Yes
Minimum pipe diameter	300 mm
Maximum height	460 mm
Minimum height	140 mm
Platform size	450x150 mm
Wheels size	Nylon
Body material	Structure made of steel
Base material	Aluminium 9095
Pneumatic engine	Metabo
Revolutions	2.500 rpm
Working pressure	6bar
Air consumption	4cfm
Shaft size	8mm



INDIVIDUAL PROTECTION EQUIPMENT

A2P POWERED VENTILATION KIT

Powered Air Purifying Respirator (PAPR) for protection against particles and/or gases and vapors. Highly recommended for hot spray applications. This kit is ready to connect to your safety helmet.

The kit includes:

- 3M Jupiter blower unit
- A filter unit
- One A2P filter
- A filter cover
- Ten prefilters
- Two spark arrestors
- A high-capacity battery
- A smart charger
- A charging stand
- An adjustable breathing tube
- A decontaminable belt
- A flow indicator



Unity

1

A2P FILTER KIT REPLACEMENT

Protective filter against particles, gases, and vapours for the A2P assisted ventilation kit.



Unity

1

SAFETY HELMET M-306

Provides protection for eyes, face and head with a comfortable facial seal for construction, chemical and heavy in-dusty applications.

The M-306 safety helmet is compatible with the Jupiter motorized air filtration system.



Unity

1

LIGHT OVERPROTECTION (HEAD, NECK, SHOULDERS)

Cover for head, neck and shoulders for M100 and M300 head units.



Unity

1

CHANGE PROTECTOR FILM

Replaceable peel protective film for helmet visor.



Unity

40

TERMS OF SALE

1. Form and late payment

Standards payment terms is 30 days from invoice date with a maximum of 45 days from invoice date, according to current legislation.

With a penalty for each 30 days late payment of 6% on the total invoice amount, plus bank charges associated restocking and management.

However, the payment will be confirmed after the agreement of the customer's insurance service. In case of non acceptance of insurance, the payment will be cash transfer before sending the goods.

Failure to pay the purchase price at due date constitutes a material breach of contractual obligations.

If the buyer falls into arrears, KRYPTON CHEMICAL SL is authorized to require payment of default interest, the amount of interest is 8,05%.

All the expenses generated payment delays of the invoices and expenses of returned or negotiated bank receipts will be chargeable to the client.

2. Purchase returns

All credit notes are subject to prior authorization. No merchandise will be accepted after 30 days of receipt of the same except for a poor state of the same and with the authorization of the head of sales and administrative service. Also, no return of any merchandise is accept without prior agreement of KRYPTON CHEMICAL S.L.

A penalty of 20% on value of the returned merchandise is applied.

3. Prices

All prices are in Euros and without VAT.

If the period between the purchase order and delivery, KRYPTON CHEMICAL SL changes in prices or, in general, the payment terms of deliverables, KRYPTON CHEMICAL SL entitled to apply the prices or payment terms in effect the day of the order.

KRYPTON CHEMICAL reserves the right to renegotiate and increase prices to reflect any factor beyond our control: unforeseen increase in the cost of raw materials, transportation costs or any other unforeseen circumstances that may influence prices.

4. Delivery

Delivery times are given as an indication and without obligation and any delivery delay due to a carrier problem cannot be attributed to KRYPTON CHEMICAL S.L.

Merchandise shipped by KRYPTON CHEMICAL S.L. will be freight prepaid to:

a. Minimum orders of 1,500€, applicable to national orders to the peninsula, the Balearic Islands and Andorra (postage paid until La Seu d'Urgell). Minimum order for Portugal 3,000€.

b. Check minimum order for shipments to the Canary Islands, Ceuta or Melilla. Transportation, customs management and tariff expenses are the responsibility of the customer.

c. Minimum orders of 7,000€ for the countries of the European Union. Other countries and islands consult us.

d. Shipments by ships and air consult us.

5. Incidences

All types of incidences in the goods must be reported to KRYPTON CHEMICAL S.L. in a maximum period of 7 days. If the damage has been caused by or during the transport, write them on both the delivery note of the customer and the carrier prior to its receipt.

6. Right of the buyer in case of claim for vices or faults

Those faults or defects of the goods that can be detected through proper inspection of the goods, shall be notified to KRYPTON CHEMICAL SL within four weeks from the date of receipt of merchandise. Notification must be written precisely describe the nature and extent of such faults and defects.

7. Orders on request

In case of orders on request, the customer pledges to buy the complete batch which has to be produced to cover their order. KRYPTON CHEMICAL S.L. will inform the customer about the approximate quantity (kg or units) when the order is placed. The final quantity may be slightly smaller or larger, though.

8. Product quality

Product quality is determined solely based on product specifications provided by KRYPTON CHEMICAL S.L.

The uses identified in the European Chemicals regulation (REACH) which concern goods or corresponding agreement on the contractual quality of the goods or the designated use under this contract.

9. Recycling

According n.RD 782/1998 of 01/05/1998 established in Article 18, point 1:

Responsible for the delivery of the waste of container or container used for proper environmental management, will be the final holder.

10. Modifications

KRYPTON CHEMICAL S.L. reserves the right to change or modify any of its products to improve their performance without notice.

We inform you that Krypton Chemical S.L. may revoke the obligations contracted due to force majeure from our suppliers and/or shortage of raw materials, because of the challenges created by the covid 19 pandemic situation.

THEORETICAL AND PRACTICAL TRAINING FOR COLD AND HOT APPLICATIONS



**we do it
for you.**



RAYSTON
products



What do we offer?



The secrets of high-quality polyurea membranes



Machinery and spray guns for hot applications



Spray systems and techniques for hot applications



Techniques for the best cold application of polyureas

TRAINING FOR HOT APPLICATIONS

TRAINING IN THE NEEDERLANDS: HOT SPRAY APPLIED

Location: Techical Center Spray Systems, Zeeland.

TRAINING IN SPAIN: HOT POLYUREA APPLICATIONS

Location: Krypton Chemical L'Hospitalet de l'Infant, Tarragona.

TRAINING FOR COLD APPLICATIONS

COLD POLYUREA APPLICATION

Location: Krypton Chemical L'Hospitalet de l'Infant, Tarragona, Spain.

TRAINING PRICE

700€ + IVA*

**ADVANCED TRAINING. LIMITED
AVAILABILITY.**

*Talk to your Krypton Chemical representative about special conditions for clients.

More information: training@kryptonchemical.com



WATERPROOFING



FLOORING



INDUSTRY



COMPLEMENTARY



MACHINERY



**we do it
for you.**

KRYPTON CHEMICAL S.L.

Pol. Industrial Les Tàpies
C/ Martí i Franquès 12
43890 L'Hospitalet de l'Infant
TARRAGONA · SPAIN

www.kryptonchemical.com